

Berkeley's PATHS

A Newsletter of the Berkeley Path Wanderers Association Spring 2005 Vol. 8 No. 1

Berkeley Path Wanderers Association is a grassroots volunteer group of community members who have come together to increase public awareness of the City of Berkeley's pathways. BPWA hopes to accomplish this goal through volunteer-led path walks, the identification and accurate mapping of Berkeley's complete path network, and the eventual restoration of paths that have been blocked or obscured.

Path Walks RAIN OR SHINE
10:00 am (allow 2-3 hours)
Walks are free and all are invited to attend.

Saturday Walks

Apr 9 Improved Paths

Charlie Bowen - 540-7223
charlie_paths@comcast.net

• Meet at the Park Hills fountain at Shasta and Park Hills Rds. for a chance to view first-hand our recently improved and partly improved paths, including Columbia Path, Glendale Path, and Wilson Walk. Fairly strenuous, steep stairways, hills.

May 21 Panoramic Way

Ron Sipherd

<http://www.well.com/~ronks/pix/panowalk>

• Meet at foot of Panoramic at south end of football stadium. An insider's look at this unique neighborhood. Rain cancels due to hilly paths. Moderate pace. Allow ten minutes for parking.

June 4 North Berkeley Architecture

Alan Kaplan - 526-7609 tnairea@ebparks.org

• Meet at Euclid St. entrance to Berkeley Rose Garden. Moderate pace; some stairs.

First Wednesday Walks

Apr 6 Wildland/Urban Interface

Paul Grunland - 526-8001

• Summit Reservoir at Grizzly Peak & Spruce St. Second in a series of walks, much of it on Tilden Park trails. Moderate pace. Heavy rain cancels.

May 4 Aquatic Park

Emma Morris - 525-4894

emmakathrynmorris@yahoo.com

• Meet at Aquatic Park Playground for a stroller-friendly and wheelchair-accessible walk. Go to Sixth and Addison Sts. Take Addison 5 blocks west, turn left on Bolivar, park at end of road.

June 1 Panoramic Way

Ron Sipherd

<http://www.well.com/~ronks/pix/panowalk>

• Repeat of May 21st Saturday walk.

Reflections from our ex-Board Members

December 2004 saw the retirement of six key members of the Board of Directors of the Berkeley Path Wanderers Association. Some of these people, who generously volunteered their time, have served the organization from its inception. We would like to express our thanks to these former Board members and, in this special issue, let them express themselves about the "Pathwanderers".

Charlie speaks...

Sometime in 1998 I attended a BPWA meeting at which I volunteered to be on the first Board of Directors. Gradually, I discovered the existence of paths unknown to me. But the most exciting discovery for me was that there were nearly fifty pathways that were completely neglected and unimproved. I determined to see them become actual paths.

In 2001 I created the Unimproved Paths Committee and we began to gather detailed information about the exact location and condition of all the unimproved paths. By 2003 we started having community volunteer work parties to build new paths. We now have a pool of experienced and enthusiastic workers, and we all are enjoying the whole process enormously.

--- Charlie Bowen

Jay's vision...

About five years ago, Jacque Ensign and I were trudging up the incline in John Hinkle Park; it was my second Saturday morning walk with the Path Wanderers. I asked if BPWA would like to establish a presence on the web to make announcements. She encouraged me to go right ahead. Creating the web site allowed me to post the calendar of events, path photographs, path lore, and links to related sites. Hundreds of people continue to visit the web site. Serving as BPWA's webmaster has been a heartwarming job during which I learned that nearly everyone, it seems, loves the paths.

--- Jay Cross

Tom's thoughts...

My first introduction to the BPWA occurred in 1999 during a Berkeley Historical Society walking tour being led by Paul Grunland who mentioned that a group had formed for the preservation of Berkeley's public paths. That was the beginning of my association with the "Pathwanderers".

I was invited to one of the first public meetings at Live Oak Park Recreation Center, wrote my check for \$5.00 and began my journey of returning to the community some of the benefits that I had received. I found myself becoming increasingly involved in scouting out unde-

BPWA
1442A Walnut Street, #269
Berkeley, CA 94709

Board Members

EMMA MORRIS, chair
PAT DE VITO, archivist
JACQUE ENSIGN, BPWA map
SUE FERNSTROM, treasurer
LISA FRIEDEN
SANDY FRIEDLAND, outreach/publicity
ELEANOR GIBSON, membership
PAUL MAHEU, scouts liaison
*PRESCOTT COLE, events
*MARY LYNCH, path improvement
*MARILYN SIEGEL, secretary/walks
*WILL SCHIEBER, newsletter/website
*BARBARA WEST, accounts
* new member, 2005

Reflections... (cont.)

veloped paths, mapping the paths, recruiting "path tenders", participating in construction projects, photographing path walks, attending mailing parties, composing newsletter articles, writing the new bylaws, balancing the budget and helping in any additional fashion that I could.

In my estimation, BPWA has a bright future because of its grassroots orientation, its modest overhead costs and its wide resource base of volunteers. I expect that the BPWA will continue on an expanded basis as long as the human race occupies this land named Berkeley!

--- Tom Edwards

Alan reflects...

I met Jacque Ensign at the Solano Stroll table for BPWA in 1998. "You have to join this organization," she said, and I did. She later said it would be nice if I led a walk up at the Tilden Nature Area sometime, and I did that, too, with the theme of *Tilden Nature Area History: from the lost escudo to the EEC*. I led an architectural history walk in North Berkeley (and will do so again on June 4, 2005), and participated in the Solano Stroll outreach efforts which, years earlier, had brought me into the group.

I dug holes for steps with Charlie Bowen, and marched in a *How Berkeley Can You Be?* parade dressed up (more or less) as **Rose Walk**. Writing an article on Charles Keeler, civic leader and bad poet,

was a great opportunity for me to advance the cause of "Berkeley's forgotten man", and I enjoyed presenting a talk on *Urban Birds and their Songs* at a general meeting in the spring of 2004. Our association is people and activities and the paths, and I have enjoyed my contacts with all of you.

--- Alan Kaplan

Karen's story...

When I was eighteen years old commuting from Walnut Creek to San Francisco, I was told that an old lady had made a map of stairways in the Berkeley hills. It sounded like a treasure map to me, having spent weekends of my youth wandering the Mt. Diablo foothills.

Nearly twenty years later, on a near whim I decided to write a book: to find out about the stairs, their history, and the people around them. To begin my search I set off to find that elusive map. By happenstance I met Eleanor Gibson, discovered BPWA, and within several months I was on the young board. As resident graphic designer I transformed the newsletter from paste up to digital, and along with contributing my watercolors of paths, gave BPWA a visual identity. Meanwhile BPWA evolved from a needle in the City's side to a trusted collaborator.

Path walks on Saturdays, monthly evening meetings; I devoured path history, and marveled at the complimentary skills of all the board members: political, administrative,

financial...social activism. What a warm and welcome ride it has been.

I never found that original map. But as one of six map committee members, we made our own. Perhaps one day the old lady will be me.

--- Karen Kemp

Susan's contribution...

I feel very lucky to have come along at the right time, and more or less stumbled onto the initial board of BPWA. I remember my surprised discovery, years before, of platted paths that were blocked by fences or vegetation. What a joy to find a group eager to do something about that, along with maintaining and repairing the beautiful paths and steps already built.

Because I already organized work parties for Friends of Five Creeks, it was easy for me to focus on what volunteers could do. With Paul Maheu and Boy Scouts of Troop 19, we worked out ways to install steps and improve drainage. Berkeley Parks Department Mini-Grants provided money for materials.

Our smaller program -- improving a couple of paths a year -- has now gone into high gear with Charlie Bowen's great leadership. I'm happy to be able to lead walks, do publicity, and otherwise help the new Board as the organization continues to flourish.

--- Susan Schwartz



For more information please see our web site at:
www.berkeleypaths.org

If you have any concerns about path issues please e-mail us at info@berkeleypaths.org.

BPWA is a member of Berkeley Partners for Parks, a 501(c)(3) tax-exempt organization.

We need money for path construction

For the first time we are coming to our membership with a plea for money for path-building materials. City funding for this purpose is no longer available due to budget cuts. Because we have been accelerating path building, we need to buy more materials than in years past. Please help us by sending your tax-deductible donation to:

Berkeley Path Wanderers Association
1442A Walnut Street #269
Berkeley, CA 94709



See a missing sign or graffiti?

- Please report missing path signs to Sandy Friedland, ssf@comcast.net
- Graffiti can be reported to the city by calling 644-6620.

Annual membership in Berkeley Path Wanderers Association is \$5.00 per household, due **January 1st** of each year. Donations are always welcome. Benefits include a newsletter, and BPWA mailings.

Mail form (opposite) with check or money order, payable to:

Berkeley Path Wanderers Association
1442A Walnut St., #269,
Berkeley, CA 94709

BPWA Membership Form Please print clearly

Name _____

Address _____

City _____

Zip _____

E-mail _____

Telephone _____

✧ *Special Summer Event* ✧

Sunday, July 24 PICK-A-PATH PICNIC
• BPWA members and their friends are invited to select one of several self-guided path walks and then to gather at Codornices Park from noon onwards for a picnic. The walk routes, picnic location, and other details will be available at www.berkeleypaths.org (Click on [Pick-a-Path Picnic Day](#) under Events.)

Berkeley's PATHS

A Newsletter of the Berkeley Path Wanderers Association Summer 2005 Vol. 8 No. 2

Path Walks RAIN OR SHINE
10:00 am (allow 2-3 hours)
Walks are free and all are invited to attend.

Saturday Walks

July 9 Explore Lower Cerrito Creek and Albany Hill - Susan Schwartz - 848-9358 F5creeks@aol.com • Meet at the north end of Cornell St., south edge of El Cerrito Plaza (near Trader Joe's). An easy walk to explore history and restoration of Cerrito Creek and Albany Hill.

August A Saturday Walk
To be announced • Please watch our web site.

September 10 Wildlife, History, and Future of the Berkeley Waterfront
Susan Schwartz - 848-9358 - F5creeks@aol.com • Meet at Sea Breeze Market, University Avenue just west of the freeway. The meadow restoration and new trails should be open.

First Wednesday Walks

July 6 East Bay Regional Parks Botanic Garden, Tilden Park
Robert Mackler and Jacque Ensign - 524-4715
• Meet at the entrance to the Tilden Botanic Garden. Two docents will give a tour. Call to register; limited to 20 participants.

August 3 A Scenic Historic Richmond Bay Trail Walk - Bruce and Sandra Beyaert - 235-2835 - beyaert@earthlink.net
• Meet at Shimada Park. Exit I-580 on Marina Bay Parkway and drive toward the Bay. In about one mile, enter parking lot of Shimada park on left. Enjoy a 3-mile level walk to visit exhibits in Rosie the Riveter Historic Park.

September 7 Back to School Walk
Barbara Robben - 524-2383 • Meet at Live Oak Park on west side of building by playground. Easy walk to visit local schools.

Meetings

LIVE OAK RECREATION CENTER
1301 SHATTUCK AVENUE

August 18 - 7:00 p.m. - Board Meeting
• Business meeting open to all BPWA members.

Walk the Ohlone Greenway -- Discover its Exhibits

Many BPWA members keep mainly to paths in the hills. A nice change of pace is the Ohlone Greenway, a long pathway of more than three miles that is wide, flat and paved. Although the path stretches from Ohlone Park (at Hearst and MLK) in Berkeley through Albany and El Cerrito to Richmond, our focus is the part in the Westbrae section of Berkeley, the Ohlone Greenway Natural and Cultural History Interpretative Exhibit.

Noteworthy points begin near the intersection of Hopkins and Peralta Streets, where the BART tracks become elevated. Close to this intersection are three City of Berkeley Community Gardens – the Karl Linn, Peralta, and Northside. The public is welcome to enjoy the gardens when they are open, usually on weekends. Just outside the

Peralta Garden is the beginning of the history exhibits, an adobe gateway posted with the Spanish history of the area.

Walking north, you will see the efforts of California Habitat Indigenous Activists to transform the borders of the path into the original native Coastal Prairie. These volunteers collect and plant seeds to create a beautiful native landscape. A bit further on, notice the cow sculptures together with tractor seats, a testament to the area's agricultural era.

Some of the artwork, done here by contemporary artists, was inspired by the Ohlone Tribe, who were believed to be Berkeley's first inhabitants. Note the long mural, from Elk Tracks to BART Tracks, a colorful display of the area's modes of transport from pre-history onwards.

This one-block section of the Ohlone Greenway, together with the adjacent community gardens, is a beautiful public space created by many volunteers over the last six years, with funding from the City of Berkeley and BART.

If you need a break from trudging up and down the paths and stairs in the hills, come and enjoy the Ohlone Greenway.

--Mary Lynch



Ohlone Greenway Artwork

Please turn over for more news...

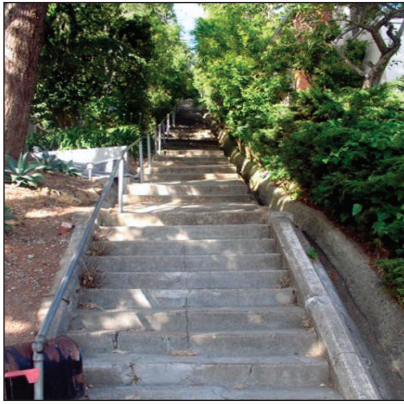
BPWA
1442A Walnut Street, #269
Berkeley, CA 94709

Board Members

EMMA MORRIS, chair
PAT DE VITO, archivist
JACQUE ENSIGN, BPWA map
SUE FERNSTROM, treasurer
LISA FRIEDEN
SANDY FRIEDLAND, outreach/publicity
ELEANOR GIBSON, membership
PAUL MAHEU, scouts liaison
*PRESCOTT COLE, events
*MARY LYNCH, path improvement
*MARILYN SIEGEL, secretary/walks
*WILL SCHIEBER, newsletter/website
*BARBARA WEST, accounts
* new member, 2005

Meet the Paths: Eucalyptus Path -- Challenges, Charms, and Panoramas

Although most of Berkeley's paths are on the Northside, twenty-two stairways and footpaths grace its Southside. One of my favorites, the challenging Eucalyptus Path, is actually in Oakland. The lower entrance to the path is above the Claremont Hotel at the intersection of Alvarado and Alvarado Court (Hotel Place on the BPWA map). This path is long and steep, but its 139 steps are lined with handrails and punctuated with ramps.



Eucalyptus Path

If you take the path up, which I recommend, you'll get a workout. Rest stops will let you enjoy the Bay views behind you and the eclectic houses, gardens, and gates on both sides. Eucalyptus Path provides the only access for residents, guests, and groceries of nine houses located along it. Six are nearly one hundred years old. During the firestorm, the path was a key evacuation route,

and fire fighters hauled hoses up and down it. Although many houses on Alvarado were lost, on the path just the deck of #36 burned.

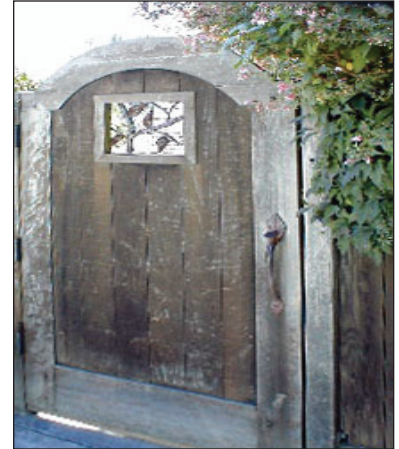
A series of double steps and short ramps comprise the first third of the path. Catch your breath on the bench at #27, where a pittosporum creeps over the trellis and matching gate. To your right is Sunset Trail, one of a few level paths in the Berkeley hills. Wander it for some spectacular glimpses of the Bay beyond the lower fences.

Returning to Eucalyptus, don't miss the rustic gate at #36. At #44, completed in 2002, marvel at the elaborately carved doors, gate, and pillars from a former mosque in Pakistan. Numbers 43 and 51 are tucked along an interesting brick and concrete walk. As you near the summit, pink camellias, jumbo lemons, climbing roses, and wisteria cascade over fences. Return to Alvarado Road under the arching tangles of cotoneaster and weigela.

Once your pulse rate returns to normal, you can descend to your starting point by one of two routes. The first takes you left on Alvarado. Veer left onto Slater Lane, and go left again onto Evergreen Lane. At the cul-de-sac, take Evergreen Path back to lower Alvarado. Alternatively, turn right onto Alvarado and right again onto

Willow Walk. When you reach #277 Alvarado Road, turn right and continue down to your starting point. Whichever direction you choose, you will enjoy the blend of new and old in this delightful Berkeley-Oakland neighborhood.

-- Sandy Friedland



Gate on Alvarado Road

\$\$ Your Donations Appreciated \$\$

Many thanks to those of you who have sent in contributions for path-building expenses—we appreciate your support enormously. As you can see from the report on new paths we have built, we are putting the money to good use. We still need donations, so if you would like to contribute, tear off the form below and mail it, with your check, to us.



See a missing sign or graffiti?

- Please report missing path signs to Sandy Friedland, ssf@comcast.net
- Graffiti can be reported to the city by calling 644-6620.

For more information about our activities, please see our web site at: www.berkeleypaths.org

If you have any concerns about path issues, please e-mail us at info@berkeleypaths.org

BPWA is a member of Berkeley Partners for Parks, a 501(c)(3) tax-exempt organization.

Progress Report: New Paths This Year...

This year has been our most prolific year yet of path-building. We started in January by putting a few finishing touches on **Wilson Walk**. By early February, we cleared and installed steps on **Columbia Walk**. The lower end was completed by an Eagle Scout project in April. We were very pleased to complete work on **Lower Glendale Path** by the beginning of April. This path has benefited from two Eagle Scout projects in March, plus a city-

built concrete stairway at the bottom end and several of our own BPWA work parties. The three Glendale Paths will be an important link in a critical recreation and evacuation route for this area. **Acacia Steps** was also completed, thanks to another Eagle Scout project, followed up by a recent BPWA work party. We are now working on **Upper Covert Path**. We invite you to watch it develop as the summer progresses. -- Charlie Bowen

Annual membership in Berkeley Path Wanderers Association is \$5.00 per household, due January 1st of each year. Donations are always welcome. Benefits include a newsletter and BPWA mailings.

Mail this form with check or money order, payable to:

Berkeley Path Wanderers Association
1442A Walnut St., #269,
Berkeley, CA 94709

BPWA Donation/Membership Form Please print clearly

Name _____

Address _____

City _____

Zip code _____

E-mail _____

Telephone number _____

I would like to donate \$ _____ for path-building

My check includes \$5.00 for a new membership renewal membership

Berkeley Path Wanderers Association is a volunteer group of community members who have come together to increase public awareness of the City of Berkeley's pathways. Our activities include path walks, identification and accurate mapping of Berkeley's path network, and the restoration of paths that have been blocked or obscured.

Path Walks

10:00 am (allow 2-3 hours) Walks are free and all are invited to attend. For additional information on walks please see our web site, www.berkeleypaths.org

Saturday Walks

October 8 • 100th Anniversary of 1905 Berkeley Fire

Steve Finacom stuart60@pacbell.net

• Meet on Gayley Road, just below the entrance to the Hearst Greek Theatre on the eastern edge of the UCB campus. Steve is a local historian and author.

November 12 • Upper Rockridge

Sandy Friedland ssf@comcast.net

• Meet at intersection of Rockridge Blvd. and Broadway, SE corner by white pillared entrance and bench.

December 17 • John Muir Historic Site in Martinez

Marilyn Siegel - (510) 549-2908

• Meet at Visitor's Center, 4202 Alhambra Ave, corner of Alhambra and State Highway 4. From Hwy. 80 take 4 eastbound to Stockton/Martinez. Take Alhambra exit, go left under freeway and left again into the Visitor's Center parking lot.

First Wednesday Walks

October 5 • Old and New Paths

Jacque Ensign (510) 524-4715

• Meet at Live Oak Park on Walnut Street.

November 2 • Tilden Nature Area

Emma Morris - emmakathrynmorris@yahoo.com

• Meet at the front entrance to the Environmental Education Center next to the Little Farm. A stroller-friendly, easy walk, no hills. Rain cancels.

December 7 • Urban-Wildlife Interface

Paul Grunland (510) 526-8001

• Third in a series of walks on this topic. Meet at the Park Hills fountain just east of intersection of Shasta Rd. and Grizzly Pk. Blvd. Moderate pace, on dirt trails and sidewalks. Rain cancels.

Meetings

September 15 - 7:00 p.m. - Annual Meeting

Hillside Club, 2286 Cedar Street, Berkeley

• General meeting open to BPWA members. See notice on page 2.

October 20 - 7:00 p.m. - Board Meeting

Live Oak Recreation Center

• Business meeting open to BPWA members.

Berkeley's PATHS

A Newsletter of the Berkeley Path Wanderers Association Fall 2005 Vol. 8 No. 3

New Edition of the Map of Berkeley's Pathways



The Path Wanderers Association is pleased to announce the release of the third edition of its path map. The map shows all of the city-owned paths that provide pedestrian access to various parts of Berkeley as well as other trails.

We are very proud of the fact that close to 12,000 maps have already been sold. The first edition appeared in 2002 and quickly made it to the local Top Ten List for Nonfiction Bestsellers, with a second edition in 2003.

The new map is the result of diligent work by BPWA's Map Committee, who researched the mapped area to improve accuracy. It includes numerous changes that clarify features and correct known errors.

The new map shows ten newly completed paths, reflecting the extensive path-building efforts of the Path Wanderers in the last two years. Construction of new paths has been managed by the Berkeley Department of Public Works with the help of BPWA volunteers, local Boy Scout troops, and other civic groups.

The ten new paths are among approximately forty city-owned rights-of-way that, when neighborhoods were developed in the north and east parts of Berkeley, were set aside for paths but were never completed. As more and more residents

became car owners, the momentum to finish the planned paths waned and these walkways became increasingly difficult to find as weeds and brambles took over and encroachments from neighboring properties became common.

BPWA's coordinator for path-building, Charlie Bowen, observed that "the Wilson Walk right-of-way, near the Lawrence Hall of Science, was so steep and overgrown, you couldn't see the bottom from the top". Bowen organizes frequent work parties for volunteers who help to clear overgrown paths and install steps. The City also participates by installing concrete stairways on the steep sections of paths that volunteers can't manage.

Emma Morris, president of the group, says that volunteer initiatives have accomplished "near-miracles" on the paths. "We hope that one day all the paths will be finished so residents and visitors can use them for recreation and as short cuts to schools, shops, and public transportation. They are important evacuation routes in emergencies, as we learned during the Oakland-Berkeley Firestorm in 1991."

The ten newly completed paths make it safer and more enjoyable to walk from the lower parts of Berkeley to Tilden Park.

An example is Stevenson Path which, together with Stoddard Path, extends well up into the hills.

Continued on reverse side...

BPWA
1442A Walnut Street, #269
Berkeley, CA 94709

Board Members

EMMA MORRIS, chair
PAT DE VITO, archivist
JACQUE ENSIGN, BPWA map
SUE FERNSTROM, treasurer
LISA FRIEDEN
SANDY FRIEDLAND, outreach/publicity
ELEANOR GIBSON, membership
PAUL MAHEU, Scouts liaison
*PRESCOTT COLE, events
*MARY LYNCH, path improvement
*MARILYN SIEGEL, secretary/walks
*WILL SCHIEBER, newsletter/website
*BARBARA WEST, accounts
* new member, 2005

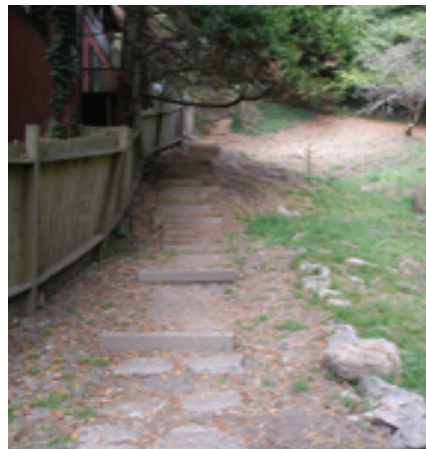
New BPWA Map of the Paths (continued)

The three parts of Glendale Path (see story, below) connect the top of Glendale Avenue with the Selby Trail in Tilden. Also new are Wilson Walk, Shasta Path, Columbia Walk, and Acacia Steps.

The new edition has all of the official Berkeley paths clearly marked (there are over 136). All paths are identified by name as well as city-assigned number. Printed on durable, water- and stain-resistant paper, the new map also serves as an

easy-to-read street map.

Maps continue to sell for \$4.95 and are available directly from BPWA by mail or on our walks. They are also sold at bookstores around the city and other shops that sell maps and outdoor gear. Members of the Path Wanderers get a \$1.00 discount if they buy their maps directly from the Association (see our web site for ordering information). We will also have the new map at our Solano Stroll booth.



Glendale Path

Glendale Path: A Solid Accomplishment!

Glendale Path appears as a solid line on the third edition of the BPWA Paths Map just published, indicating that it is now a passable path. Remarkable, considering its length and difficulty.

This long path consists of the three distinct sections. It extends from the intersection of Glendale Avenue and Campus Drive up to the intersection of Fairlawn Drive and Arcade Avenue. Although the elevation rise is 160 feet, it seems only moderately steep because of the length of the path.

At its lower end, the path's initial 33-step cement stairway with hand rail was constructed by the City of Berkeley last year. At the top of this stair is a fairly gentle grade with several sets of wooden steps and stepping stones, constructed as part of two Eagle Scout projects. The top third of Lower Glendale presented quite a challenge because of its steepness. Nevertheless, over several work parties, BPWA volunteers laid 63 wooden steps. This Lower Glendale section is the longest and the most easily navigated.

Continuing across Queens Road brings one to the bottom of Middle Glendale. A short steep section at the very bottom requires a scramble up (grading and steps to be added soon). The rest of this section is gradual and can easily be walked to the top at Fairlawn Drive.

Crossing Fairlawn Drive brings one to a set of stairs (under con-

struction at press time) that mark the bottom of Upper Glendale. These stairs, going steeply up and over a rocky outcrop, required professional design and construction. As one ascends to the top of the newly built stairway, the grade is again gradual, and leads to the top of the path where one finds a set of older cement stairs.

The most difficult part of Glendale Path, its upper segment, represents a joint effort of BPWA which funded the survey and design, and the city of Berkeley. A grant from FEMA to the City was given to improve the access and egress in the Berkeley Hills in case of another fire or emergency (like the Oakland Berkeley Hills fire of 1991).

Glendale Path was selected because it is a fairly straight route, and would thus serve as an excellent escape in the case of a fire or other emergency, as well as providing a way for fire-fighting personnel to move fire hoses up or down the hill.

Quite apart from these very practical reasons for the improvement and completion of Glendale Path is the prospect of recreational use. Walking the full extent of Glendale Path from La Loma Glendale Park brings the walker to within a block of Grizzly Peak Blvd, and then it is only a short walk (via Atlas Path) into Tilden Park and the wealth of recreational opportunities that it offers.

-- Mary Lynch, BPWA Board

BPWA Annual Meeting

The featured speaker at this year's annual meeting will be Jonathan Chester, local photographer and author of "Berkeley Rocks - Building with Nature", a fascinating new book that highlights Berkeley's prominent rock outcroppings. This should be a truly enjoyable presentation. Thursday, September 15 - 7:00 p.m. Hillside Club, 2286 Cedar Street

Come Ye Walkers, to the Stroll

The Path Wanderers will again have a booth at the Solano Stroll that takes place on Sunday, September 11 from 10:00 a.m. to 6:00 p.m. Come and see us; we will have copies of our new map and our notecards. They can be purchased from our volunteers. The BPWA Booth location is at 1742 Solano Avenue - right in front of Pharmaca.

A Donation for a Faithful Friend

A big thank you to Des and Marian Simpson of Berkeley who made a very generous donation to BPWA in memory of their curly-coated retriever, Jake, who died in April of this year. In his last year he could only walk on his favorite path -- nearby Stoddard Path -- instead of his more ambitious wanderings in the hills with his devoted owners.

For more information about our activities, please see our web site at: www.berkeleypaths.org

If you have any concerns about path issues, please e-mail us at info@berkeleypaths.org

BPWA is a member of Berkeley Partners for Parks, a 501(c)(3) tax-exempt organization.

Annual membership in Berkeley Path Wanderers Association is \$5.00 per household, due January 1st of each year. Donations are always welcome. Benefits include a newsletter and BPWA mailings. Mail this form with check or money order, payable to:

Berkeley Path Wanderers Association
1442A Walnut St., #269
Berkeley, CA 94709

BPWA Donation/Membership Form Please print clearly

Name _____

Address _____ City _____ Zip code _____

E-mail _____ Telephone number _____

I would like to donate \$ _____ for path-building

My check includes \$5.00 for a new membership renewal membership

News Flash!!

Buy maps, join, donate on-line

We have now added a secure payment function to our web site. You can buy maps, join, renew your membership, or donate to BPWA. You can also order maps or membership as gifts. Pay by credit card or with your PayPal account. Our web site: www.berkeleypaths.org

Path Walks

10:00 a.m. (allow 2-3 hours) Walks are free, and all are invited to attend. For additional information on walks please see our web site: www.berkeleypaths.org

Saturday Walks

January 7 • Beautiful Old and New Staircases

Susan Schwartz 848-9358 F5creeks@aol.com
• Meet at Live Oak Park on Walnut St. side

February 4 • Redwood Park Nature/Mushroom Walk

Robert Mackler rdmackler@aol.com
• Take Redwood Road entrance to Redwood Regional Park; meet in bottom parking lot. For a map, go to ebparks.org.

March 4 • Eugene O'Neill's Tao House, Danville

Jim Kantor
• Call 925-838-0249 for directions and reservations. Jim is UCB Archivist Emeritus and has been a docent at the Eugene O'Neill House for ten years. Tao House web site: <http://www.nps.gov/euon/>

First Wednesday Walks

January 4 • Thousand Oaks Walk

Jacque Ensign jacqueensign@earthlink.net
• Meet at Marin Circle.

February 1 • Pathways of Northeast Berkeley

Paul Grunland 510-526-8001
• Meet at the front entrance to the Environmental Education Center next to the Little Farm. A stroller-friendly, easy walk, no hills. Rain cancels.

March 1 • Santa Fe Right of Way, Present and Future

Susan Schwartz F5creeks@aol.com
• Meet in front of North Berkeley Bart Station, intersection of Shattuck Avenue and Center Street.

Berkeley's PATHS

A Newsletter of the Berkeley Path Wanderers Association Winter 2005 Vol. 8 No. 4

A Holiday Message from the BPWA President

Since BPWA began in 1998, our path-building activities have been financed almost entirely through the City of Berkeley Mini-grant Program. These grants helped us pay for path-building materials while volunteers provided the muscle.

Unfortunately, the city has cut the Mini-grant Program from the budget. We now must look to fundraising to continue to meet our goals. Roughly thirty paths still are unfinished, and the developed paths need continual maintenance.

Although BPWA is committed to finding new sources of support, we need donations to continue our work. Our Unimproved Paths Program has great momentum,



but a typical stairway of 100 steps requires \$500 in wood and steel rebar. A survey to ensure that a new path is correctly sited on City property can cost \$1,000 or more. Your gift will enable us to continue our important work.

So please include BPWA in your annual giving (you can donate on our web site) and know that you will be helping to open new vistas to path walkers!

We also need new members. Our dues are still only \$5.00 a year, and we have deliberately kept them low

to encourage people to join. That fee covers the printing and mailing of our quarterly newsletter, our dues to Berkeley Partners for Parks, maintenance of our web site, and supplies for our walks and meetings.

You are most likely reading this newsletter because you already belong to BPWA. Please remember to renew your membership, which you can also do now on our web site or by returning the form on the other side of this newsletter.

We have some 600 members, which is impressive. But if the 12,000 maps we have sold are an indication, many more people are enjoying Berkeley's pathways.

We would like all path walkers to belong to BPWA. The more members we have, the louder our message to the city: Berkeley residents value and use the paths, and the pathways are worthy of city support. Membership numbers are also important when we submit grant proposals to foundations and other funding sources.

You can strengthen BPWA and increase our influence by giving memberships to friends and relatives. Use the mail-in coupon or the membership function on our web site to order gift memberships. Your gesture will delight each recipient, and you will be supporting our efforts to maintain and improve the paths and stairways we all cherish.

-- Emma Morris, Pres., BPWA

Newsletter continues on reverse side...

BPWA
1442A Walnut Street, #269
Berkeley, CA 94709

Board Members

EMMA MORRIS, chair
MARILYN SIEGEL, secretary/walks
SUE FERNSTROM, treasurer
PRESCOTT COLE, events
PAT DE VITO, archivist
JACQUE ENSIGN, maps
LISA FRIEDEN
SANDY FRIEDLAND, outreach/publicity
ELEANOR GIBSON, membership
MARY LYNCH, path improvement
PAUL MAHEU, Scouts liaison
WILL SCHIEBER, newsletter/website
BARBARA WEST, accounts

Meet the Paths: Acacia Steps *by Sandy Friedland*

With rustic stepping stones at its top and irises, daisies, and a rain-bow of cineraria along its borders, Acacia Steps is among Berkeley's loveliest paths. It is also a model of how neighbors, civic groups, and BPWA can collaborate to maintain our treasured walkways.

Linking Spruce Street and Cragmont Avenue high in northeast Berkeley, Acacia Steps is one of ten paths added to the new edition of the BPWA map. All were considered unsafe until city engineers and volunteers improved them. Last spring an Eagle Scout project along with BPWA path builders added 41 steps to the treacherous lower section.

Now the path is a favorite of families going to and from nearby Dorothy Bolte Park and First Step preschool and of commuters who catch the #67 bus on Spruce.

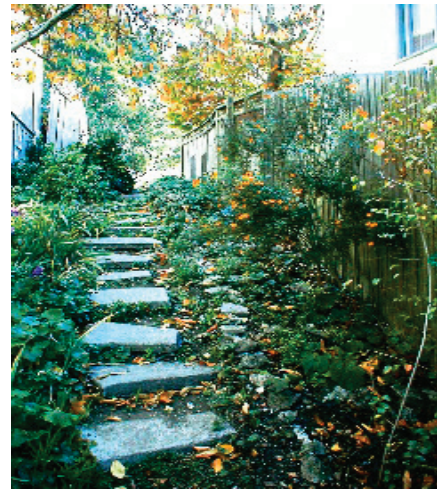
Acacia Steps still lacks signs, but

the bottom lies between the story-book-style, half-timbered houses at 537 and 543 Spruce. They are thought to be the work of Oakland architect Walter W. Dixon. On Cragmont, the path begins between #'s 598 and 600.

Long before the recent improvements, neighbors had shared their irrigation systems and gardening skills to beautify the path. The late physicist Harvey White, first director of Lawrence Hall of Science, lived at 543 Spruce and installed the stepping stones.

Neighbors are enthusiastic about the improvements to Acacia Steps. Eugenie Bruck, of 600 Cragmont, calls the path a "social center."

"It is so much more accessible now, and everyone just loves it," she says. "I meet the nicest people I wouldn't have gotten to know otherwise."



Acacia Steps

BPWA to be at Holiday Crafts Fair

Visit representatives of the Path Wanderers at the Berkeley Farmers' Market Holiday Crafts Fair in Civic Center Park on two Saturdays: December 10, and 17. We will be selling the latest edition of our Berkeley's Pathways map, a great stocking stuffer. We are sharing booth space with the Berkeley Historical Society at 1931 Center Street. The event runs from 10:00 a.m. to 4:00 p.m. on each of the two days.

How We Build a New Path *by Charlie Bowen*

Often I get questions about what is involved in transforming an overgrown and impassible City right-of-way into a walkable path with signs at top and bottom.

Upper Covert Path (#54 on our map), our most recent achievement, serves as an example of our path-building. Covert is a ten-foot-wide strip of public property that runs between Keeler and Cragmont Avenues. There are vacant lots to the north of the path, and the adjacent south addresses are 1146 Keeler and 1171 Cragmont.

We decided that Upper Covert was an excellent choice to build because there were no usable paths for between Keeler and Cragmont in this area. Also it is part of a series of paths that ultimately will lead from Keith Avenue up to Grizzly Peak Boulevard.

After conferring with the Public Works Department, BPWA commissioned a survey of the path boundaries. I then contacted the adjacent neighbors, who were very positive and cooperative. Everyone agreed that building the path would open more pedestrian options in the area.

Then we met with an engineer from Public Works at the path site to review our plans and get approval for actual construction.

We then began having work parties at regular intervals. Our construction crew consisted of BPWA volunteers and groups of high school and college students.

As usual, we borrowed tools from the Berkeley Tool Library. First we cleared the path route and then began measuring, digging, and placing the steps, using pre-cut wood and steel rebar. After nine work parties during the summer, we had installed 147 steps.

When the remaining steps have been installed, we will ask the City to place signposts at both ends of the path. Next summer we will see how the path is weathering and perform maintenance if needed. Meanwhile, we hope that people will discover and enjoy this nearly-completed path.

If you would like to join a work party, please contact me, Charlie Bowen, by phone (540-7223) or by e-mail (charlie_paths@comcast.net).

New BPWA Board Members

The Annual BPWA Meeting was September 15, 2005. The following eight Board members were elected:

Robert Armstrong (1st term)
Charlie Bowen (1st term)
Sandy Friedland (2nd term)
Lori Kohlstaedt (1st term)
Paul Maheu (2nd term)
Dale Miller (1st term)
Susan Schwartz (1st term)
Jerry Wachtel (1st term)

About BPWA

• Berkeley Path Wanderers Association is a volunteer group of community members who have come together to increase public awareness of the City of Berkeley's pathways. Our activities include path walks, identification and accurate mapping of Berkeley's path network, and the restoration of paths that have been blocked or obscured.

- Our activities are listed on our web site: www.berkeleypaths.org.
- Concerns about path issues? E-mail us at info@berkeleypaths.org
- BPWA is a member of Berkeley Partners for Parks, a 501c3 tax-exempt organization.

Household or gift memberships in BPWA are \$5.00, due January 1. Donations are welcomed. Benefits include a newsletter and other BPWA mailings. You can complete these transactions either on our web site or by mailing this form with check or money order, payable to:

BPWA
1442A Walnut Street, #269
Berkeley, CA 94709

If you are giving a membership for someone, please be sure to enclose the name and address of each recipient.

BPWA Donation/Membership Form Please print clearly

Name _____

Address _____

City _____

Zip code _____

E-mail _____

Telephone number _____

I would like to donate \$ _____ for path-building

I am enclosing \$ _____ for membership(s) new renewal gift