

[View this email in your browser](#)



CITY PROCLAMATION HONORS BPWA'S 25TH



Left to right, Attendees included past president Lori Kohlsteadt, past board member Glenn Lindwall, cofounder Jacque Ensign, current board member Jane Andersen, past president Colleen Neff, and current board members Bob Gomez and Tamara Gurin.

Berkeley Honors BPWA's 25th Anniversary with Proclamation

In recognition of 25 years of mapping, constructing, and maintaining the public

stairs and pathways, the Berkeley City Council issued [a proclamation](#) recognizing the Berkeley Path Wanderers Association's community volunteer effort.

The document was read aloud by longtime supporter Councilmember Susan Wengraf. On hand to accept the proclamation from Mayor Jesse Arreguin was Jacque Ensign, 91, one of the four cofounders of Berkeley Path Wanderers Association in 1998.

Ensign thanked the City of Berkeley, leadership, and staff for all the cooperation needed to bring the network of over 130 pathways back into a prominent place in our community. Special thanks were also given to late Councilmember Betty Olds, Councilmember Sophie Hahn, and Wengraf.

CELEBRATE 25 YEARS OF PATH WANDERERS ON AUG. 6



Last year's Path-a-thon site was Willard Park; meet us this year at Live Oak!

2023 Path-a-thon: Celebrate 25 years of Path Wanderers on Aug. 6!

Join us on August 6 for our annual Path-a-thon and 25th anniversary celebration at Live Oak Park! Three Path Wanderers board members will lead three walks of various length and difficulty that all start and end at the lovely, shaded Live Oak Park. Choose the walk that fits your ability and interest, then join us back at Live Oak Park around noon to celebrate.

The Path-a-thon walks are:

[Upper Shattuck and Marin Circle](#) (1.75 miles)

[Rocks and Roofs](#) (4 miles)

[Every Path in Berkeley finale - Walk 6](#) (7 miles)

Whether you spend the morning walking or not, ALL ARE WELCOME for the 25th anniversary celebration at noon at Live Oak Park, at the picnic area between Walnut and Oxford streets (near the Berkeley Art Center). At 1 p.m. President Janet Byron will host a short program to award the “I Walked Every Path in Berkeley” pins to finishers of the [6-walk “Every Path in Berkeley” series](#), and we will receive a proclamation from the Berkeley City Council for our 25th anniversary.

Path Wanderers will provide beverages, pizza, and cake. Feel free to bring something to share with fellow path-lovers, if you would like. We'll also have swag for sale.

25TH ANNIVERSARY DONATIONS



In honor of our 25th anniversary, please consider making a special donation of \$25, \$250, or \$2,500 (or any amount!) to help Berkeley Path Wanderers Association reach its goal of a [handrail](#) on every path that needs one (about 55 handrails to go)!

Plus, we've made it easier to donate with a new PayPal option on our website!

DONATE NOW!

ANNOUNCEMENTS

Visit us at the Solano Stroll!

Visit our booth at the Solano Stroll on September 10, 10 a.m. to 5 p.m. We'll have lots of fun swag for sale, including the 10th edition map and 25th anniversary T-shirt, plus Bob Johnson and Janet Byron will sign copies of the new Heyday Books edition of [Berkeley Walks](#) from 1 to 2 p.m. Come and say hi, and share your path stories with us!

Looking for a few great board members

Berkeley Path Wanderers Association board members serve 2-year terms with the option to renew once. Our fun board meets about monthly. Write to info@berkeleypaths.org to volunteer for Berkeley paths!

Editor/graphic designer: We are looking for an editor/layout person to oversee production of our monthly newsletter and other communications, including a website and blog. Our platforms are currently MailChimp (email) and SquareSpace (website/blog); both are fairly easy to learn and we will train you in the basics. The editor/graphic designer could be separate board positions or the same person.

UPCOMING WALKS

NOTE: Heavy rain cancels; watch email for cancellation notices.

Short Path-a-thon Walk: Upper Shattuck and Marin Circle

When: Sunday, August 6, 10:30 a.m.–12 p.m.

Leader: Robert Johnson

Distance: 1.75 miles

Start/end at BPWA Path-a-thon

location: [Live Oak Park](#)

Accessibility: Hills with grades to around 10%, and some steps. Well-behaved dogs on leash are permitted.

This walk will head north to initially explore the residential area near Upper Shattuck Avenue. From there, we'll sweep around east up a little into the hills, then back south toward the start. This walk includes



some hills, primarily on paved sidewalks, and 5 to 6 public paved paths and a stairway. [READ MORE](#)



Medium Path-a-thon Walk: Rocks and Roofs

When: Sunday, August 6, 10 a.m.–12 pm.

Leader: Bonnie Forer

Distance: 4 miles

Start/end at BPWA Path-a-thon

location: [Live Oak Park](#)

Accessibility: Moderate pace without breaks, optional rock paths are uneven. No dogs. Not wheelchair accessible.

We will discover most of the wonderful rock parks in the Berkeley Hills by using the steps and paths, and we'll find some unusual, beautiful roofs along the way. [READ MORE](#)

Path-a-thon Long Walk/Every Path in Berkeley Walk 6: The Grand Finale

When: Sunday, August 6, 9 a.m.–12:30 p.m.

Leader: Janet Byron

Distance: 7 miles

Start/end at BPWA Path-a-Thon

location: Intersection of [Shattuck and Berryman](#) at Live Oak Park

Accessibility: No handrails on some of the stairways, and some walking on roads without a sidewalk. Children are welcome.

Join us for the Grand Finale of the Every Path in Berkeley series! Join Berkeley Path Wanderers Association president Janet Byron for a walk that will cover the rest of the North Berkeley paths and will go by the Marin Circle fountain (shown in historic photo) and two rock parks. [READ MORE](#)





Steps and Trails

When: Saturday, August 12, 8:30 a.m.–11:30 a.m.

Leader: Tamara Gurin

Distance: 6 miles, 1,100-foot elevation gain

Start/end: [Rose Garden, 1200 Euclid Ave., vista platform](#)

Accessibility: Includes stairs and Tilden Park trails. Well-behaved dogs on leash are welcome.

Join us for this fast-paced hike with spectacular views of the Bay! We will take stairways to Grizzly Peak Boulevard, then Selby Trail, and Grizzly Peak Trail to the Grizzly Peak Vista Point on Grizzly Peak Boulevard, returning back to the Rose Garden. Note: Parking by Rose Garden on Saturday is limited to 2 hours. Free parking is available on the nearby streets. Don't be late; we will be leaving at 8:35 a.m. sharp. [READ MORE](#)

1923 Berkeley Fire Walk

When: Sunday, September 17, 9 a.m. –11 a.m.

Leader: John Ford

Distance: 3 miles

Start: [Berryman Reservoir](#), across the street from 1360 Euclid Avenue, near Codornices Road

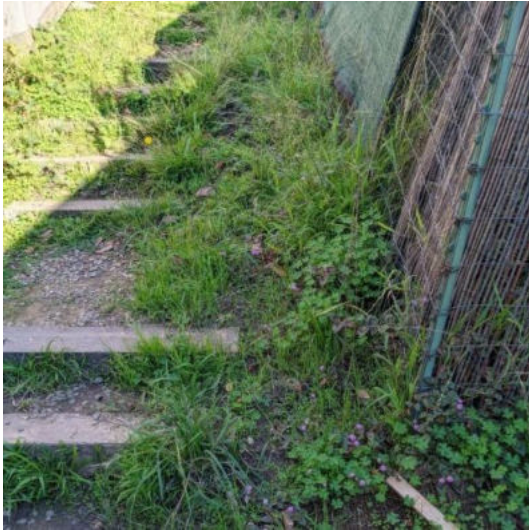
End: [Live Oak Park](#)

Accessibility: Stairs and steep streets. Well-behaved dogs on leash are welcome.



This walk covers parts of the Berkeley Hills neighborhoods that were devastated by a [large fire](#) that destroyed nearly 600 homes in North Berkeley on this day 100 years ago. We will see some of the notable buildings that replaced those destroyed in the fire and check out others that were saved by Cal students wielding hoses on the edge of campus. We will end at Live Oak Park, where the City of Berkeley is holding a commemorative event at 11 a.m. [READ MORE](#)

PATH MAINTENANCE WORK PARTIES



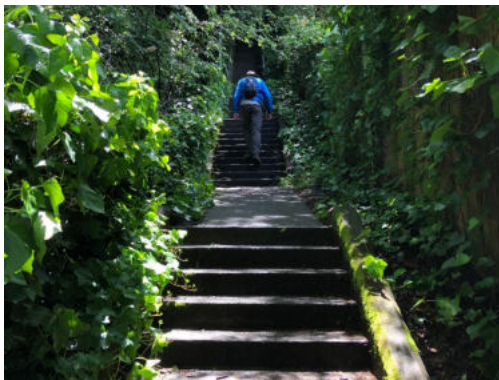
Join us for a path maintenance work party!

Monday, August 14, 10 a.m.–12 p.m.

Sunday, August 27, 10 a.m.–12 p.m.

The work is mostly weeding, sweeping, raking, and clipping. We will have gloves and tools available, but feel free to bring your own. Please bring your own water; we won't be offering water or refreshments. Please RSVP to receive an email with the time, date, and meeting place by writing to Mary Lynch at path.maintenance@berkeleypaths.org.

Berkeley Path Wanderers Association



Berkeley Path Wanderers Association is a community organization of people who treasure the public pathways that crisscross our city. [Learn more](#)

The BPWA board generally meets monthly. Our next meeting is Thursday, Aug. 10, 7 p.m. on Zoom. Guests are welcome! Please contact info@berkeleypaths.com for more information.

To support Berkeley's paths, you can [donate online](#). All donations go toward building new paths, repairing and clearing paths, purchasing handrails, and advocating for paths.



Copyright © 2023 Berkeley Path Wanderers Association, All rights reserved.

Want to change how you receive these emails?

You can [update your preferences](#) or [unsubscribe from this list](#).

