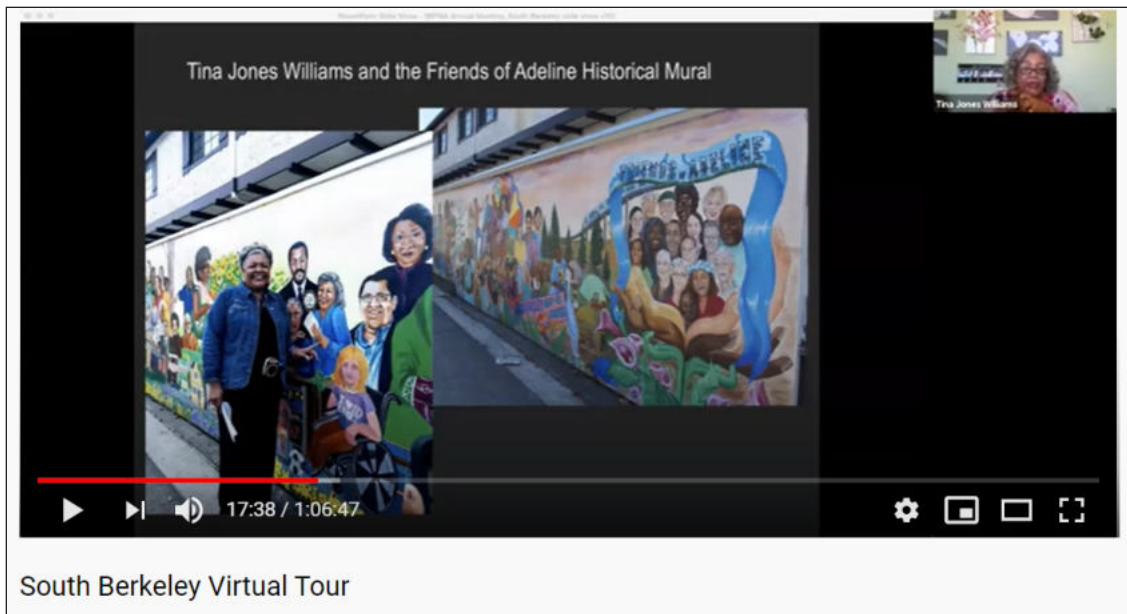


Email not displaying correctly? View it in your browser.



## ANNUAL MEETING AND VIRTUAL TOUR



### Watch our Meeting and South Berkeley Virtual Tour Online

Unable to attend the Berkeley Path Wanderers Association annual meeting and South Berkeley virtual tour on October 18? We missed you too!

Both events were recorded and can be enjoyed at your leisure on YouTube.

Click here to watch the [annual meeting](#) and [South Berkeley virtual tour](#).

## GO ON A SCAVENGER HUNT

### The Perfect Path-Wandering Pandemic Pursuit



What's old is new! Take the (new and improved) Parks and Paths Challenge: Rose Garden and Beyond! Started as a fundraiser 5 years ago, our family-friendly scavenger hunt became a popular adventure that we looked forward to every summer. Are you looking for fun activities closer to home during the pandemic? Try this updated version of the 2016 game as a downloadable PDF in our store.

From the Rose Garden to Tilden Park to Berkeley's newest path (built in 2020), you will search for clues in over 20 parks and paths all over the hills. The PDF includes full-color maps, scavenger hunt questions, and an answers sheet. Please note: the game does not include walking routes; the navigational puzzle is part of the challenge: use the map provided to create routes that hit all the scavenger hunt checkpoints. Plan carefully to make sure your 2-mile walk doesn't turn into a 5-mile walk!

**For \$5, you can download both a 2-mile and 8-mile version of the [Rose Garden and Beyond](#) challenge.** All proceeds go to our handrail fund. As a reminder, the 2020 Paths and Parks Challenge: [Thousand Oaks](#) neighborhood is also available in our online store.

Thank you for your support and have fun exploring!

## STEP IT UP - 5 NEW WALKS

**STEP IT UP: *An Adventurer's Guide to Forty Walks on the Paths, Trails, and Streets of Berkeley and Beyond***

*by Jacob Lehmann-Duke and Zeke Gerwein*

### **Berkeley Path Wanderers**

**Association is honored to publish this exciting new book of 40 walks in Berkeley and beyond. We're posting 5 new walks each month until the whole book is available online.**

### **NEW IN NOVEMBER:**

[Paths of Panoramic Hill](#)

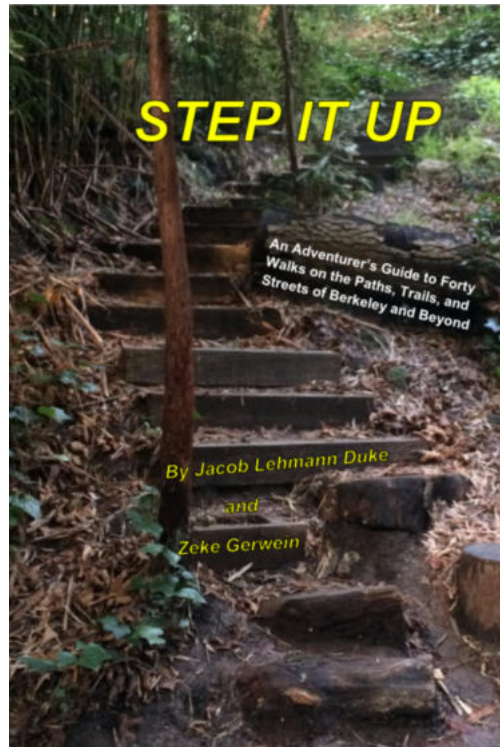
[Every Path in Berkeley, Part 6](#)

[Ascent to the Ridge: Arroyo and Big Springs](#)

[From the Forest to the Ridge](#)

[BART to BART Berkeley to](#)

[Richmond Trail Walk](#)



To download PDFs of all currently available Step It Up walks, visit the [Table of Contents](#). To contact the authors, please write to [stepitup@berkeleypaths.org](mailto:stepitup@berkeleypaths.org)

## **SELF-GUIDED WALKS**

### **Online resources for self-guided Berkeley walks**

Many folks are walking closer to home these days, and our [self-guided walks](#) page is getting lots of traffic. We are happy to provide these resources, and hope you are enjoying your solo and/or socially distanced explorations.

*Left, a stone house at 2595 Piedmont, on Ron Sipherd's [Willard neighborhood walk](#).*



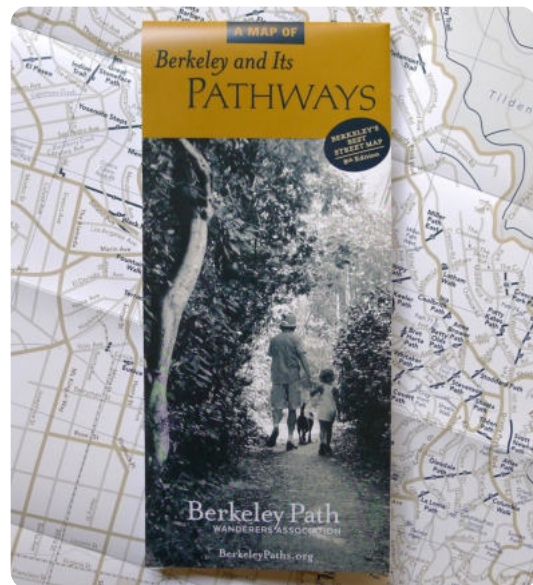
## BUY OUR MAP

### Simply the Best Map of Berkeley

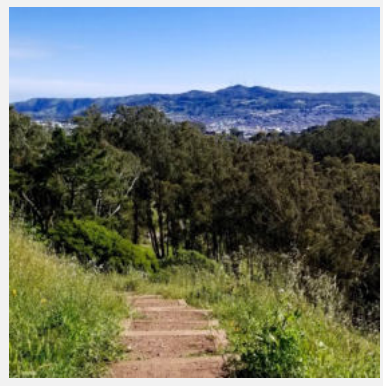
With proper social distancing and mask-wearing, walking is one of the best ways to ease the anxiety and "cooped-up-ness" of sheltering in place. Not surprisingly, our map has been flying off the shelves during the coronavirus pandemic.

If you want to get out of the house and explore Berkeley on foot, *Berkeley and Its Pathways* is hands-down simply the best map of Berkeley. This sturdy, detailed and beautiful map features the entire city — including neighborhoods without a lot of paths — plus all 136 of the picturesque public stairways, ramps, and foot paths that make walking in our city so engaging.

[Buy Our Map](#)



## Berkeley Path Wanderers Association



Berkeley Path Wanderers Association (BPWA) is a community organization of people who treasure the public pathways that crisscross our city. [Learn More](#)

The BPWA board meets on the 3rd Thursday of every month, 7:30 to 9 p.m., virtually until further notice. Guests are welcome! Please contact [info@berkeleypaths.com](mailto:info@berkeleypaths.com) for more information.

Your generosity enables us to build more paths and to hold fun events on the paths. [Donate Now](#)



Facebook



Website



Email

This email was sent to [<<Email>>](#)

[why did I get this?](#) [unsubscribe from this list](#) [update subscription preferences](#)

Berkeley Path Wanderers Association · 1442 Walnut St · Box 269 · Berkeley, CA 94709 · USA