

# Berkeley's PATHS

A Newsletter of the Berkeley Path Wanderers Association, June 2004 Vol. 7 No. 2

*Berkeley Path Wanderers Association is a grassroots volunteer group of community members who have come together to increase public awareness of the City of Berkeley's pathways. BPWA hopes to accomplish this goal through volunteer-led path walks, identification and accurate mapping of Berkeley's complete path network, and eventual restoration of paths that have been blocked or obscured.*

**Meetings** Live Oak Park Rec. Center  
7-9 pm 1200 Shattuck Ave (unless noted)

**July 29 Board Meeting**

**Aug 19 Board Meeting**

**Sept 16 Annual Meeting**  
Chuck Wollenberg on Berkeley  
History—at the Hillside Club

**Path Walks** RAIN OR SHINE  
Saturdays at 10:00 am (allow 2-3 hours)

**Jun 19** Three Writers, One Artist, Many Paths  
Dale Miller, 524-4758  
Meet at the bottom of Terrace Walk.

**July 10** The (Partly) Improved Paths  
Charlie Bowen, 540-7223  
Meet at Park Hills Road and Shasta, off Grizzly Peak  
Blvd, at the fountain.

**Aug. 7** Shorebird Park and Bay Trail Extension  
Patty Donald, 644-8623  
Meet at the foot of University Avenue at  
Shorebird Park Nature Center (a strawbale  
construction building!).

**Sept. 11** A Stroll in Miller/Knox Regional Park  
Sandra and Bruce Beyaert, 235-2835  
Great views of the Bay and Ferry Point

**First Wednesday Walks**  
10:00 am (allow 2-3 hours)

**July 7** meet at Aquatic Park near the  
children's playground parking lot. Note: THIS  
WALK IS STROLLER AND KID FRIENDLY!  
Emma Morris, 525-4894

**Aug 4** Volunteer is needed—please call  
Alan Kaplan, 526 7609

## Building Paths—See the Recent Progress



Since the beginning of the year, good things have been happening on several unimproved paths, due to the righteous physical labor of the Boy Scouts from Troop 19 and a group of great volunteers from BPWA. We invite everyone to look at the results on these paths:

### **Lower Glendale Path (#84):**

The big news is that the City of Berkeley has built a concrete stairway at the bottom of this path—the first new staircase in many years, and we hope the beginning of a fruitful new collaboration with the city: their contractors can build fairly short concrete staircases on the steep path segments, and our volunteers can clear, improve drainage, and install wooden steps on the gentler segments.

Neighbors have removed fences that were blocking the path and BPWA volunteers have cleared the entire pathway and

**The entrance of lower Glendale Path (above) with newly poured concrete steps was built by the City in May. The path (circled at left) is in the Berkeley View Terrace neighborhood which was platted in 1926 by L'Hommedieu and Wilson Inc. The plat included 16.5 pathways, none of which were built. Ina Way is called Queens Road today.**

**BPWA**  
1442A Walnut Street, #269  
Berkeley, CA 94709

### **Board Members**

JACQUE ENSIGN, chair  
PAT DE VITO, archivist  
ELEANOR GIBSON, recording secretary  
SUE FERNSTROM, treasurer  
KAREN KEMP, newsletter  
JAY CROSS  
CHARLIE BOWEN  
TOM EDWARDS  
LISA FRIEDAN  
ALAN KAPLAN  
EMMA MORRIS  
SUSAN SCHWARTZ  
HELEN WYNNE

**Webmaster** NIRANJAN VISSA

### Building Paths *continued*

installed wood-tie steps in the middle section. We hope to have the path done and signs installed before the end of this year.

**Middle Glendale Path (#83):** We hope to begin clearing and installing steps on this path after a planned survey by the City of Berkeley.

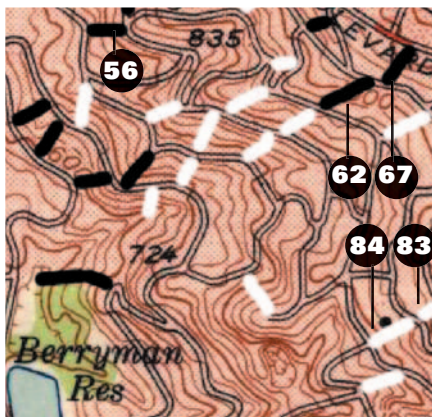
**Upper Glendale Path (#82):** A January work party did the huge task of clearing berry bushes from this path. Despite rudimentary temporary steps, the VERY steep, rocky section at the bottom of the path remains a barrier. We are looking for someone with landscape design ideas to help figure out a plan for that portion!! The three Glendale Paths are a key element in our planned Ridge-to-Bay "Urban Trail," which continues up to Tilden Park via Atlas Path, a major project completed a couple of years ago by Eagle Scout candidates from Berkeley Boy Scout Troop 19.

**Stoddard Path (# 67):** Cal students started the work on this path last spring and then several BPWA work-parties—with great help from neighbors—have completed this path from Grizzly Peak down to Miller.

**Upper Stevenson Path (#62):** Major clearing has been done and steps have been installed on the steepest sections. Additional steps are needed, but the path is now very walkable. It's possible to continue down on lower Stevenson Path, but

our goal is to get city help on a few steps at the bottom, after which we'll install wooden steps on the steep upper end.

**Sterling Path (#56):** Three recent Eagle Scout projects from Troop 19 have made it much easier and safer to walk the dirt portions of beautiful Sterling Path, from Cragmont Street up to Keeler Path and the "back entrance" to Remillard Park. Scouts Owen McDougall, Adrian Delmer, and Luc Maheu installed steps, drainage diverters, and a small retaining wall, and cleverly incorporated a raised manhole. The last project, by Luc Maheu, also added a lovely community bulletin board.



**Stoddard Path (upper right of map)—now built—leads from Grizzly Peak Boulevard to the top of Stevenson Path (also recently improved) at elevation 1000 feet. BPWA has their sites on the remaining unimproved paths (in white) with the goal of creating another chain of pathways from peak to base.**



**Sterling Path's new community bulletin board.**

**Wilson Walk (#96):** Thanks to UC students last fall, major clearing was done. BPWA volunteers recently put in steps on the lower part of the path, and we are progressing towards the top. With your help at the next work parties, we hope to make this steep but beautiful path near Lawrence Hall of Science usable this year.

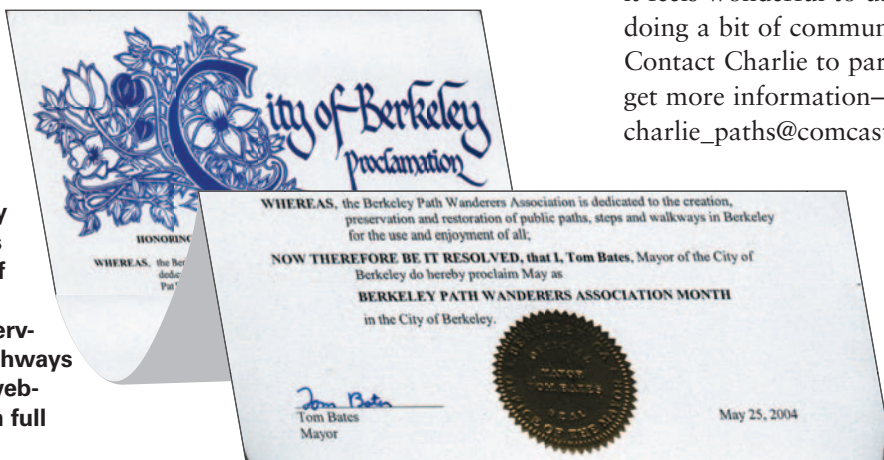
Another fruitful collaboration has been with the East Bay Conservation Corps' Urban Tree Recycling Mill, which mills urban trees into fencing and other landscaping products while providing training for at-risk youth. Our wood steps are now recycled from the urban forest, 992 7800.

### ARE YOU INTERESTED IN THE UNIMPROVED PATHS?

Charlie Bowen is always looking for more people to build these paths. Feel the rewards by what a group can accomplish under 2 hours; the *before* and *after* are incredible. We always have refreshments, end promptly, and it feels wonderful to use your muscles doing a bit of community service. Contact Charlie to participate or get more information—540-7223 or charlie\_paths@comcast.net.

## May is Berkeley Path Wanderers Association Month

At the May 25th City Council meeting Betty Olds, on behalf of the council, proclaimed May to be Berkeley Path Wanderers Association Month in honor of all the success achieved by all who have contributed to preserving, restoring and creating pathways in Berkeley for all. Go to our website to see the proclamation in full [www.berkeleypaths.org](http://www.berkeleypaths.org).



*If you have any concerns about path issues please call Jacque at 524-4715.*

Annual membership in Berkeley Path Wanderers Association is \$5.00 per household **due January 1st** of each year. Donations are always welcome. Benefits include newsletter, and BPWA mailings. Mail form with check or money order, payable to: BPWA, Berkeley Partners for Parks 1442A Walnut St., #269, Berkeley, CA 94709 (BPWA is a member of Berkeley Partners for Parks, a 501(c)(3) tax-exempt organization.)

## BPWA Membership Form **Please print**

Name \_\_\_\_\_  
Address \_\_\_\_\_ City \_\_\_\_\_ Zip \_\_\_\_\_  
Email \_\_\_\_\_ Telephone \_\_\_\_\_