

✧ *Special Summer Event* ✧

Sunday, July 24 PICK-A-PATH PICNIC
• BPWA members and their friends are invited to select one of several self-guided path walks and then to gather at Codornices Park from noon onwards for a picnic. The walk routes, picnic location, and other details will be available at www.berkeleypaths.org (Click on [Pick-a-Path Picnic Day](#) under Events.)

Berkeley's PATHS

A Newsletter of the Berkeley Path Wanderers Association Summer 2005 Vol. 8 No. 2

Path Walks RAIN OR SHINE
10:00 am (allow 2-3 hours)
Walks are free and all are invited to attend.

Saturday Walks

July 9 Explore Lower Cerrito Creek and Albany Hill - Susan Schwartz - 848-9358 F5creeks@aol.com • Meet at the north end of Cornell St., south edge of El Cerrito Plaza (near Trader Joe's). An easy walk to explore history and restoration of Cerrito Creek and Albany Hill.

August A Saturday Walk
To be announced • Please watch our web site.

September 10 Wildlife, History, and Future of the Berkeley Waterfront
Susan Schwartz - 848-9358 - F5creeks@aol.com • Meet at Sea Breeze Market, University Avenue just west of the freeway. The meadow restoration and new trails should be open.

First Wednesday Walks

July 6 East Bay Regional Parks Botanic Garden, Tilden Park
Robert Mackler and Jacque Ensign - 524-4715
• Meet at the entrance to the Tilden Botanic Garden. Two docents will give a tour. Call to register; limited to 20 participants.

August 3 A Scenic Historic Richmond Bay Trail Walk - Bruce and Sandra Beyaert - 235-2835 - beyaert@earthlink.net
• Meet at Shimada Park. Exit I-580 on Marina Bay Parkway and drive toward the Bay. In about one mile, enter parking lot of Shimada park on left. Enjoy a 3-mile level walk to visit exhibits in Rosie the Riveter Historic Park.

September 7 Back to School Walk
Barbara Robben - 524-2383 • Meet at Live Oak Park on west side of building by playground. Easy walk to visit local schools.

Meetings

LIVE OAK RECREATION CENTER
1301 SHATTUCK AVENUE

August 18 - 7:00 p.m. - Board Meeting
• Business meeting open to all BPWA members.

Walk the Ohlone Greenway -- Discover its Exhibits

Many BPWA members keep mainly to paths in the hills. A nice change of pace is the Ohlone Greenway, a long pathway of more than three miles that is wide, flat and paved. Although the path stretches from Ohlone Park (at Hearst and MLK) in Berkeley through Albany and El Cerrito to Richmond, our focus is the part in the Westbrae section of Berkeley, the Ohlone Greenway Natural and Cultural History Interpretative Exhibit.

Noteworthy points begin near the intersection of Hopkins and Peralta Streets, where the BART tracks become elevated. Close to this intersection are three City of Berkeley Community Gardens – the Karl Linn, Peralta, and Northside. The public is welcome to enjoy the gardens when they are open, usually on weekends. Just outside the

Peralta Garden is the beginning of the history exhibits, an adobe gateway posted with the Spanish history of the area.

Walking north, you will see the efforts of California Habitat Indigenous Activists to transform the borders of the path into the original native Coastal Prairie. These volunteers collect and plant seeds to create a beautiful native landscape. A bit further on, notice the cow sculptures together with tractor seats, a testament to the area's agricultural era.

Some of the artwork, done here by contemporary artists, was inspired by the Ohlone Tribe, who were believed to be Berkeley's first inhabitants. Note the long mural, from Elk Tracks to BART Tracks, a colorful display of the area's modes of transport from pre-history onwards.

This one-block section of the Ohlone Greenway, together with the adjacent community gardens, is a beautiful public space created by many volunteers over the last six years, with funding from the City of Berkeley and BART.

If you need a break from trudging up and down the paths and stairs in the hills, come and enjoy the Ohlone Greenway.

--Mary Lynch



Ohlone Greenway Artwork

Please turn over for more news...

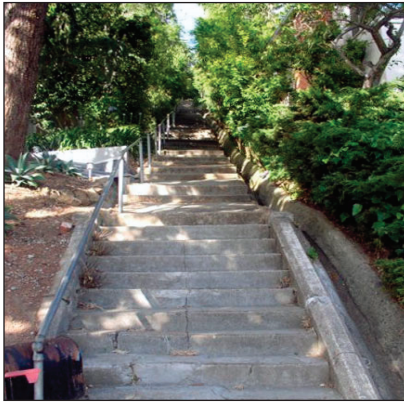
BPWA
1442A Walnut Street, #269
Berkeley, CA 94709

Board Members

EMMA MORRIS, chair
PAT DE VITO, archivist
JACQUE ENSIGN, BPWA map
SUE FERNSTROM, treasurer
LISA FRIEDEN
SANDY FRIEDLAND, outreach/publicity
ELEANOR GIBSON, membership
PAUL MAHEU, scouts liaison
*PRESCOTT COLE, events
*MARY LYNCH, path improvement
*MARILYN SIEGEL, secretary/walks
*WILL SCHIEBER, newsletter/website
*BARBARA WEST, accounts
* new member, 2005

Meet the Paths: Eucalyptus Path -- Challenges, Charms, and Panoramas

Although most of Berkeley's paths are on the Northside, twenty-two stairways and footpaths grace its Southside. One of my favorites, the challenging Eucalyptus Path, is actually in Oakland. The lower entrance to the path is above the Claremont Hotel at the intersection of Alvarado and Alvarado Court (Hotel Place on the BPWA map). This path is long and steep, but its 139 steps are lined with handrails and punctuated with ramps.



Eucalyptus Path

If you take the path up, which I recommend, you'll get a workout. Rest stops will let you enjoy the Bay views behind you and the eclectic houses, gardens, and gates on both sides. Eucalyptus Path provides the only access for residents, guests, and groceries of nine houses located along it. Six are nearly one hundred years old. During the firestorm, the path was a key evacuation route,

and fire fighters hauled hoses up and down it. Although many houses on Alvarado were lost, on the path just the deck of #36 burned.

A series of double steps and short ramps comprise the first third of the path. Catch your breath on the bench at #27, where a pittosporum creeps over the trellis and matching gate. To your right is Sunset Trail, one of a few level paths in the Berkeley hills. Wander it for some spectacular glimpses of the Bay beyond the lower fences.

Returning to Eucalyptus, don't miss the rustic gate at #36. At #44, completed in 2002, marvel at the elaborately carved doors, gate, and pillars from a former mosque in Pakistan. Numbers 43 and 51 are tucked along an interesting brick and concrete walk. As you near the summit, pink camellias, jumbo lemons, climbing roses, and wisteria cascade over fences. Return to Alvarado Road under the arching tangles of cotoneaster and weigela.

Once your pulse rate returns to normal, you can descend to your starting point by one of two routes. The first takes you left on Alvarado. Veer left onto Slater Lane, and go left again onto Evergreen Lane. At the cul-de-sac, take Evergreen Path back to lower Alvarado. Alternatively, turn right onto Alvarado and right again onto

Willow Walk. When you reach #277 Alvarado Road, turn right and continue down to your starting point. Whichever direction you choose, you will enjoy the blend of new and old in this delightful Berkeley-Oakland neighborhood.

-- Sandy Friedland



Gate on Alvarado Road

\$\$ Your Donations Appreciated \$\$

Many thanks to those of you who have sent in contributions for path-building expenses—we appreciate your support enormously. As you can see from the report on new paths we have built, we are putting the money to good use. We still need donations, so if you would like to contribute, tear off the form below and mail it, with your check, to us.



See a missing sign or graffiti?

- Please report missing path signs to Sandy Friedland, ssf@comcast.net
- Graffiti can be reported to the city by calling 644-6620.

For more information about our activities, please see our web site at: www.berkeleypaths.org

If you have any concerns about path issues, please e-mail us at info@berkeleypaths.org

BPWA is a member of Berkeley Partners for Parks, a 501(c)(3) tax-exempt organization.

Progress Report: New Paths This Year...

This year has been our most prolific year yet of path-building. We started in January by putting a few finishing touches on **Wilson Walk**. By early February, we cleared and installed steps on **Columbia Walk**. The lower end was completed by an Eagle Scout project in April. We were very pleased to complete work on **Lower Glendale Path** by the beginning of April. This path has benefited from two Eagle Scout projects in March, plus a city-

built concrete stairway at the bottom end and several of our own BPWA work parties. The three Glendale Paths will be an important link in a critical recreation and evacuation route for this area. **Acacia Steps** was also completed, thanks to another Eagle Scout project, followed up by a recent BPWA work party. We are now working on **Upper Covert Path**. We invite you to watch it develop as the summer progresses. -- Charlie Bowen

Annual membership in Berkeley Path Wanderers Association is \$5.00 per household, due January 1st of each year. Donations are always welcome. Benefits include a newsletter and BPWA mailings.

Mail this form with check or money order, payable to:

Berkeley Path Wanderers Association
1442A Walnut St., #269,
Berkeley, CA 94709

BPWA Donation/Membership Form Please print clearly

Name _____

Address _____

City _____

Zip code _____

E-mail _____

Telephone number _____

I would like to donate \$ _____ for path-building

My check includes \$5.00 for a new membership renewal membership