

*Status Report of the Berkeley Paths Network  
Berkeley Path Wanderers Association, April 2024*

**Berkeley** has about 140 public paths and stairways. These walkways were drawn on the original plat maps of the City, they exist on City property, and are all built except for 21. They are used for recreation and for pedestrian connections to public transit and they can be critical for evacuations in emergency situations. Since 1998, the Berkeley Path Wanderers Association (BPWA) has been working to raise awareness of the paths and to eventually complete the path network by constructing one to two new paths per year. Attached to this report are lists of the 37 paths BPWA built to date (Attachment A) and the 21 paths still to be built (Attachment B). Our volunteers also maintain the paths by sweeping, weeding, and cutting back encroaching vegetation. We are an all-volunteer group; our fiscal sponsor is Berkeley Partners for Parks. In recognition of our volunteer efforts, in January 2021, the Berkeley City Council named four paths after BPWA's four women founders.

Many of the older paths were built contemporaneously with the surrounding homes and other structures as Berkeley grew (Rose Walk, the Bancroft Steps and Vine Lane would be examples). These historic paths are largely concrete and were engineered and constructed by the City or by developers.

The BPWA-built paths are 'landscaped' paths using three-foot wood ties with rebar anchoring them to the soil. The work is done by trained volunteers and all materials are paid for by donations. We install handrails when possible, though this is expensive and often times cost-prohibitive for our non-profit.

The enclosed is a report on what remediation is needed to bring the path network into good condition. The findings are largely based on a field surveys that BPWA organized on July 22, 2018, and again on May 21, 2023. On 'survey day' nearly 80 volunteers fan out all over the city and, clipboards in hand, walk all the paths and record their condition (signage, steps, handrails, overgrowth, etc.). This report is a living document; it is periodically updated to reflect progress made since the time of the most recent field survey. The next all-paths survey will take place in 2028.



*BPWA volunteers building a new path:  
Lower Halkin Walk (August 2020)*

Since the 2018 survey, BPWA has prioritized repairs of wood tie steps and vegetation clearing of overgrown paths at our volunteer maintenance parties. Through these parties, we work on about two dozen paths each year. BPWA has also alerted the City of Berkeley Department of Public Works (DPW) on work that our volunteers cannot perform and where we need the City to step in – such as adding street signs or performing structural and handrail repairs on the historic concrete paths. DPW works on replacing missing signage (see Table 1), performs structural repairs and adds handrails on historical concrete paths (see Table 2). DPW funds are very limited, but we are hopeful that one or two historical paths could be addressed by DPW each year.

We are excited about the recent progress made improving the path network and look forward to updating the community on future efforts. BPWA is extremely grateful to our committed volunteers and supporters without whom this work would not be possible.

Please email [info@berkeleypaths.org](mailto:info@berkeleypaths.org) with questions or information needs regarding this report. For more information on the paths and BPWA, our website can be found at [www.berkeleypaths.org](http://www.berkeleypaths.org).

### Findings summarized in this report

- |  |  |
|--|--|
| Table 1. Paths with missing/ inaccurate signs    | Attachment A: Paths developed by BPWA since 1998 |
| Table 2. Paths with major structural issues      | Attachment B. List of undeveloped paths          |
| Table 3. Paths with broken handrails             | Attachment C. Complete handrail inventory        |
| Table 4. Paths that need handrails               |  |
| Table 5. Paths in need of vegetation maintenance |  |

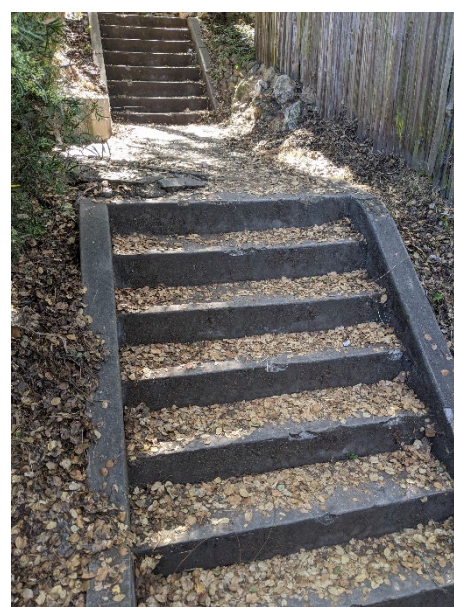
### Examples of issues summarized in the report



Uneven/ broken steps on concrete path



Broken step on landscaped path



Steep stairs, no handrails



**Table 1. Paths with missing / obstructed / bent signs, as of May 2023.**

Note: City of Berkeley is responsible for all signage, except in Park Hills subdivision. The Park Hills paths are listed at the end of the table.

Count	Path	Lower Signs		Upper Signs		Address for missing signs/ Other comments
		Path	Cross St	Path	Cross St	
1	Acacia Steps	✓	✗	✓	✗	Bottom: between 1112-1114 Hillview Rd Top: between 1125-1141 Woodside Rd
2	Alta Vista Path	✓	✗	✓	✓	Bottom: between 731-733 Sant Barbara Rd
3	Anne Brower Path	✓	✓	✓	✓	Top: between 65-69 Stevenson Ave Note: Top sign post bent.
4	Arden Path	✓	✓	✓	✗	Top: West of 299 Panoramic Way
5	Atlas Path	✓	✓	✓	✓	Bottom: between 1311-1321 Grizzly Peak Blvd. Note: Bottom sign should be moved to start of path (it's too far south and completely obstructed by vegetation).
6	Bancroft Steps	✗	✗	✓	✓	Bottom: Bancroft Way & Warring St
7	Berryman Path (Lower)	✓	✓	✗	✗	Top: Across from 1301 Walnut St
8	Berryman Path (Middle)	✓	✓	✗	✗	Bottom: between 1301 Walnut St & Berkeley Arts Center
9	Black Path	✓	✓	✓	✗	Top: S of 928 Mendocino Ave Bottom: NE corner of Solano Ave and Contra Costa Ave Note: Bottom sign is twisted
10	Columbia Path (Lower)	✗	✗	✗	✗	Bottom: between 1365-1373 Campus Dr Top: between 1398-1400 Queens Rd
11	Covert Path (Lower)	✓	✓	✓	✓	Bottom: between 1175-1177 Keith Ave. Note: Bottom sign is bent and obstructed.
12	Devon Lane (Lower)	✗	✗	✗	✗	Bottom: Somerset Pl & Southampton Ave Top: between 763-765 San Diego Rd
13	El Mirador Path (Lower)	✓	✓	✗	✗	Top: between 1118-1120 Keith Ave.
14	El Paseo (Upper)	✗	✗	✓	✓	Bottom: between 659-661 Santa Rosa Ave
15	Eunice Steps	✓	✗	✗	✗	Bottom: 2015 Eunice St Note: Cross street signs not needed
16	Geneva's Path	✓	✓	✓	✗	North: 1313 Curtis St. & Gilman Ave. Note: North path sign is bent.

Count	Path	Lower Signs		Upper Signs		Address for missing signs/ Other comments
		Path	Cross St	Path	Cross St	
17	Glendale Path (Middle)	x	x	✓	✓	Bottom: between 1293-1305 Queens Rd
18	Hilgard Path	✓	x	✓	x	Bottom: between 1647-1675 La Loma Ave Top: just north of 1650 La Vereda Rd.
19	Hill Court Steps	x	x	✓	✓	Bottom: between 2519-2522 Hill Ct Top: between 1542-1544 Le Roy Ave
20	Holmes Path	✓	x	✓	✓	Bottom: between 451-457 Kentucky Ave
21	Indian Rock Path (The Alameda to Contra Costa Ave segment)	✓	✓	✓	x	Top: between 898-900 Contra Costa Ave
22	Indian Rock Path (Arlington Ave to Indian Rock Ave)	✓	✓	x	x	Top: Shattuck Ave at Indian Rock Ave Signs missing at the south terminus of the path on Indian Rock Ave; North terminus signs present.
23	Indian Trail	✓	✓	✓	✓	Top: between 1890-1900 Yosemite Rd Note: Graffiti on upper sign + sign is bent.
24	Jacque Ensign Way	✓	x	✓	x	Bottom: S sidewalk of Solano Ave, just west of the tunnel Top: Across from 1972 Los Angeles Ave
25	Jeronimus Alley	x	x	x	x	Alley runs between Fifth St and Sixth St between Camelia St and Virginia St in West Berkeley. It crosses several streets. Needs signs at all cross streets.
26	Keeler Path	✓	✓	✓	x	South: 1070 Keeler Ave. & 1053 Sterling Ave.
27	La Vereda Steps	✓	x	✓	x	Bottom: top of Virginia St Top: end of La Vereda Rd Note: Need additional sign mid-way where it crosses La Vereda again.
28	Le Roy Steps	x	x	✓	✓	Bottom: between 1666-1675 Le Roy Ave
29	Martinez Path	✓	✓	✓	✓	Top: between 1146-1148 Cragmont Ave Note: top sign is very faded
30	Mendocino Path	✓	✓	✓	✓	Bottom: between 853-861 Arlington Ave Note: Bottom sign post is loose
31	North Path	✓	✓	✓	✓	Bottom: between 555-561 Cragmont Ave Note: Bottom sign is wobbly.
32	Oak Street Path (East)	✓	✓	x	x	Top: between 1155 Laurel St & 1151 High Ct

Count	Path	Lower Signs		Upper Signs		Address for missing signs/ Other comments
		Path	Cross St	Path	Cross St	
33	Oak Street Path (West)	✗	✓	✓	✓	Bottom: between 2371 Oak St & 1155 Glen Ave
34	Oakridge Steps	✓	✓	✓	✗	Top: 92 Oak Ridge Rd
35	Pinnacle Path	✓	✓	✓	✓	Top: between 58-66 Poppy Ln. Note: Top sign is bent.
36	Rose Steps	✓	✗	✓	✗	Bottom: across from 2637 Rose St Top: opposite 1401 La Loma Ave
37	Rose Walk	✓	✗	✓	✓	Top: between 1400 Le Roy Ave & 2555 Rose St
38	Santa Barbara Path	✓	✗	✓	✗	Bottom: between 597-601 San Luis Rd Top: between 572-576 Santa Barbara Rd
39	Scott Newhall Path	✓	✓	✓	✗	North: between 48-75 Hill Rd Notes: South sign (between 80-90 Hill Rd) needs to be moved closer to the path start. Could use sign half-way through (at chain link fence) to help with navigation.
40	South Crossways	✓	✗	✓	✓	Top: between 14-15 Roslyn Ct
41	Stoddard Path	✓	✓	✓	✗	Top: between 1160-1162 Grizzly Peak Blvd
42	Tanglewood Path	✓	✓	✓	✗	Bottom: North of 3 Tanglewood Rd Top: opposite 100 Stonewall Rd
43	Terrace Walk (Lower)	✓	✓	✓	✓	Bottom: SE corner of Sutter St and Del Norte St Note: Bottom sign is bent.
44	Terrace Walk (Upper)	✗	✓	✓	✓	Top: between 1042-1100 Shattuck Ave
45	Vincente Walk	✓	✓	✓	✓	Top: between 536-540 The Alameda Note: Top post is crooked and wiggly.
46	Visalia Walk	✓	✓	✓	✗	Top: between 59-69 Menlo Place
47	Vistamont Trail	✗	✓	✓	✓	South: between 626-641 Vistamont Ave
<b>The paths below are located in the Park Hills subdivision. They are private property, owned and maintained by the PH Homes Association.</b>						
1	Crescent Park Path	✗	✗	✗	✗	East Terminus: between 28-40 The Crescent North Terminus: between 2-10 The Crescent South Terminus: between 56-60 The Crescent

Count	Path	Lower Signs		Upper Signs		Address for missing signs/ Other comments
		Path	Cross St	Path	Cross St	
						None of the three path segments are signed.
2	Fred Herbert Path (Lower)	x	x	x	x	Bottom: Wildcat Canyon Rd Top: between 1113-1115 Hillview Rd
3	Fred Herbert Path (Middle)	✓	x	✓	x	Bottom: between 1112-1114 Hillview Rd Top: between 1125-1141 Woodside Rd
4	Fred Herbert Path (Upper)	✓	x	✓	x	Bottom: between 1130-1138 Woodside Rd Top: between 1131-1141 Park Hills Rd Note: Existing signs should be repainted.
5	Patty Kates Path	✓	x	x	✓	Bottom: between 1088-1100 Woodside Rd Top: between 1077-1103 Park Hills Rd Note: Could use signs to locate the path across the grassy area
6	Wildcat Path	✓	x	✓	x	Bottom: Wildcat Canyon Rd Top: between 1149 Hillview Rd & 1169 Park Hills Rd

**Table 2. Paths with major structural issues.**

Note: Table shows paths identified as having *major structural* issues in the May 2023 All-Paths Survey. Many other paths not listed here have other, less severe issues (small cracks, uneven pavement from roots, etc.).

Path	Issues noted in May 2023 survey
<b>Historic paths with concrete steps – COB makes repairs</b>	
1 Covert Path (Lower)	placement of temporary sewer line causes footbridge to be unstable; awaiting permanent fix from COB or EBMUD
2 Garber Path	deteriorating/ crumbling steps. Note: In Sep 2020, neighbors recommended path for T1 Phase 2 funds.
3 Glendale Path (Middle)	broken cement in middle section (COB responsibility) rebar sticking up in the top section (BPWA responsibility)
4 Great Stoneface Path	very poorly installed asphalt, uneven, unsafe
5 Holmes Path	several heaved steps in the middle of the path segment
6 Indian Rock Path (Contra Costa Ave to Mendocino Ave segment)	uneven concrete toward top of path
7 Indian Trail	cracked pavement in the mid section; loose stepping boulders
8 Mendocino Path	concrete broken and uneven throughout path
9 Upton Lane	section of paved incline is slanted and very steep. <a href="#">Update April 2024: COB re-poured and fixed pavement issues.</a>
10 Willow Walk	lower stairs need repairs; no drainage – tripping hazard when wet
<b>Landscaped paths with wooden steps - BPWA makes repairs</b>	
1 Acacia Steps	top flight ad-hoc, dangerous, all bit treacherous
2 Fred Herbert Path (Middle)*	rotten steps near top, protruding rebar
3 Glendale Path (Middle)	rebar sticking up on multiple steps
4 Hilgard Path	unequal step at junction of path & house, wire crossing path at chest level
5 Keeler Path	protruding rebar, uneven, broken step edges, round beam near park section
6 Miller Path East	loose and broken steps, rebar exposed on multiple steps
7 North Path	upper steps warped
8 Wilson Walk	many steps are crooked, loose, and unevenly spaced
*Path located in Park Hills HOA	

**Table 3. Paths with handrails in need of repairs, as identified in the May 2023 survey.**

Note: COB responsible for handrail repairs.

Path	Issues noted in July 2018 survey
1 Easter Way (Lower)	loose at lower post of handrail on upper stairs by Cragmont
2 Fred Herbert Path (Upper)	loose/wobbly at upper part
3 Garber Path	slight wobble in one section
4 Hill Court Steps	leaning in lower section
5 Sterling Path	handrail in top section is too tall (shoulder height)
6 Tamalpais Path	loose in place
7 The Steps	handrails leaning / crooked in lower section

Table 4. Paths that need more handrail coverage to ensure safer usage.

Note: For a complete handrail coverage inventory, please see Attachment B.

Path	Existing handrail coverage and needs as of May 2023.	Length	
<b>Historic paths with concrete steps (COB makes improvements)</b>			
1	Arden Path	Partial coverage; handrail needed for steps on bottom section	tbd
2	Boynton Walk	No handrails; handrail needed for the sections with stairs	tbd
3	Devon Lane (Lower)	Steep stairs at top of path need handrail	tbd
4	Easter Way (Lower)	Partial coverage; handrail needed for top section	tbd
5	El Paseo (Lower)	Partial coverage; handrail needed for top section with steps	tbd
6	Florida Walk	Partial coverage; handrail needed for 2 steps at the top	2'
7	Garber Path	Partial coverage; handrail needed on sections with stairs	tbd
8	Glendale Path (Upper)	Partial coverage; handrail needed at top section with stairs	tbd
	Great Stoneface Path	No handrails; handrails needed on bottom section with stairs	tbd
9	Holmes Path	No handrails; handrail needed on sections with stairs	tbd
10	Indian Rock Path (The Alameda to Contra Costa Ave segment)	Handrails needed at bottom stair section.	tbd
11	La Vereda Steps	Handrail needed on bottom section with steep stairs	tbd
12	Oak Knoll Path	No handrails; handrail needed in middle section	tbd
13	Oak St Path (West)	Handrail needed on end with cement steps. Note: Neighbors contacted CM Wengraf office June 2020 requesting handrails for this path.	tbd
14	Oakridge Path East	Handrails needed for top section (4 steps) at the top of the path by Oak Ridge Rd. Note: COB installed handrails at stairs on the bottom section of the path in Oct 2020.	est. 3'
15	Orchard Lane (Upper)	Partial coverage; handrail needed on all sections with stairs. Note: COB installed partial handrails in Dec 2020. Two sections of stairs remain without handrail coverage.	tbd
16	Pine Path	Handrail present on all flights of stairs; could use more on the paved, long, steep inclines	tbd
17	Poplar Path	Partial coverage; handrail needed at top stairs and on steep inclines	tbd
18	Redwood Terrace	Handrail present on all flights of stairs; could use more on some of the paved, steep inclines	tbd
19	Rock Walk	Handrail present on all flights of stairs; could use more on some of the paved, steep inclines	tbd
20	South Crossways	Partial coverage; handrail needed at bottom and mid sections with stairs	tbd
21	Sterling Path	Handrail present on stairs; could use more on some of the steep inclines	tbd
22	Tamalpais Path	Partial coverage; handrail needed on all sections with stairs. Note: In Oct 2020, CM Wengraf's office asked BPWA about handrails for this path; we referred them to DPW. COB looking into it.	tbd
23	The Crossways	No handrail; path is one long, fairly steep incline	tbd
24	The Cutoff	Handrail present on stairs; could use it on the steep, long inclines section	tbd



25	Tunbridge Lane	Partial coverage; handrail needed on middle section with stairs. Note: In Apr 2022, COB did concrete work on this path; COB also looking into installing handrails	tbd
26	Upton Lane	Handrail present on all flights of stairs; could use more on some of the paved, steep inclines	tbd
27	Visalia Walk	No handrails; handrail needed on all sections with stairs. Note: In Apr 2022, COB did concrete work on this path; COB also looking into installing handrails	tbd
28	Willow Walk	Partial coverage; need more on bottom steps and steep inclines	tbd
29	Yosemite Steps (Upper)	Partial coverage; handrail needed on top section with stairs. Note: Neighbors contacted BPWA requesting handrails in Jan 2020. BPWA notified DPW and met on site in May 2020; DPW did not have sufficient funding at the time.	tbd

#### **Landscaped paths with wooden steps (both City and BPWA could make improvements)**

1	Anne Brower Path	No handrails; could use full handrail.	tbd
2	Betty Olds Path	No handrails; could use full handrail.	tbd
3	Bret Harte Path	Partial; handrail on bottom half. Could use full handrail. Top 40' a priority.	min 40'
4	Cedar Path	No handrails; needs full handrail	tbd
5	Columbia Walk	No handrails; needs handrails on stair sections	tbd
6	Covert Path (Lower)	Handrail at top, could use full coverage	tbd
7	Glendale Path (Lower)	Partial coverage on lower and top stairs. Mid-section with stairs could also use handrails.	tbd
8	Hilgard Path	No handrail. Could use it especially on switchbacks on lower half.	tbd
9	John Muir Path	No handrails; handrail needed on all sections with stairs.	tbd
10	Latham Walk	No handrails; handrail needed on all sections with stairs.	tbd
11	Miller Path East	Handrail at top, needs full coverage.	tbd
12	Northgate Path	Handrail in mid-section. Needs coverage on bottom and top sections.	tbd
13	Shasta Path	No handrails; needs full handrail.	tbd
14	Sterling Path	Handrail present on all flights of stairs; could use more on some of the steep incline sections	tbd
15	Stevenson Path (Upper)	No handrails; needs full coverage on stair sections.	tbd
16	Stoddard Path	None; could use full handrail except for flat part by Grizzly Peak Blvd.	tbd
17	Tilden Path	None; upper stretch is steep and needs coverage	tbd
18	Wilson Walk	None; entire 175' is very steep and needs handrail coverage	175'

#### **Paths located in Park Hills subdivision (Park Hills HOA could make improvements)**

1	Crescent Park Path (North segment)	Could use handrails on section with stairs.	tbd
2	Fred Herbert Path (Lower)	No handrails; could use full handrail on all stair sections.	tbd
3	Fred Herbert Path (Middle)	No handrails; could use full handrail on all stair sections.	tbd
4	Fred Herbert Path (Upper)	No handrails; could use full handrail on all stair sections.	tbd
5	Wildcat Path	None; needs full coverage, but not heavily used path	tbd

Table 5. Major Vegetation Encroachment Issues (as documented in May 2023 BPWA survey, updated April 2024)

Note: BPWA is prioritizing these paths for our twice-monthly volunteer maintenance parties.

	Path	Vegetation issues documented in May 2023 survey	Updates since May 2023 survey (if any)
1	Alta Vista Path	Top sign partially obstructed by vegetation	
2	Anne Brower Path	Bottom sign obstructed by vegetation	
3	Billie Jean Walk	Both bottom and top signs obstructed by vegetation	
4	Cedar Path	Vegetation overgrown, tree leaning onto the path, collapsing fences, top sign obstructed	
5	Columbia Walk	Top sign partially obstructed	
6	Covert Path (Lower)	Bottom sign obstructed by vegetation	
7	El Mirador Path (Upper)	redwood debris & limbs down with caution tape, overgrown weeds	BPWA path building crews are re-building upper part of the path; some vegetation cleanup done. More will be scheduled when path building work is complete.
8	Glendale Path (Upper)	Bottom sign covered in mud; top sign partially obstructed by vegetation	
9	Hawthorne Steps	Top sign partially obstructed by vegetation	BPWA volunteer 'daylighted' sign 9/9/2023.
10	Hilgard Path	weeds on steps and edges; redwood debris on upper part of the path	Work party 8/27/2023; community member emailed April 2024 that cleanup is needed again.
11	Hill Ct Steps	Top sign obstructed by vegetation (ivy and cherry tree)	
12	Holmes Path	Bottom sign partially obstructed by vegetation	
13	Ina Coolbrith Path	Top sign obstructed by oak branches	
14	Indian Rock Path (Contra Costa Ave to Mendocino Ave segment)	weeds & leaves in middle section of path	
15	Indian Rock Path (Arlington Ave to Indian Rock Ave segment)	Top sign partially obstructed	
16	Keeler Path	Top steps need weeding, water/drainage needed along steps; bay tree overhanging path	
17	La Loma Path	Need weeding; blackberries, thistles etc. completely obstruct path in places	Community volunteer weeded March 2024.
18	Mendocino Path	Ivy and leafy overgrowth at middle of path; top sign obstructed by vegetation	
19	Miller Path East	Weeding needed	
20	Northgate Path	Thistles, ivy and other vegetation encroaching on path; top sign obstructed by vegetation	

	<b>Path</b>	<b>Vegetation issues documented in May 2023 survey</b>	<b>Updates since May 2023 survey (if any)</b>
21	Oakridge Path West	Bottom sign obstructed by vegetation	
22	Oakridge Steps	Top sign partially obstructed by vegetation	
23	Park Path	Top sign blocked by tree	
24	Poppy Path	Extensive weeding and trimming needed	<a href="#">BPWA volunteer work party 5/30/2023</a>
25	Redwood Terrace	Needs weeding (thistles)	<a href="#">BPWA volunteer work party 8/14/2023</a>
26	Rock Walk	Top sign obstructed by vegetation	
27	Rose Walk	Top sign obstructed by vegetation	
28	Scott Newhall Path	Overhanging vegetation impedes walking; south sign hard to see	
29	Shasta Path	Overgrown; tree limb overhanging the path; top sign obstructed by vegetation	
30	Stevenson Path (Lower)	Top sign obstructed by vegetation	<a href="#">BPWA volunteer work party 4/27/2024</a>
31	Stevenson Path (Upper)	Top sign totally covered by vegetation	<a href="#">BPWA volunteer work party 4/27/2024</a>
32	Tanglewood Path	Numerous weeds; path is very overgrown; weeds obstruct handrail	<a href="#">BPWA volunteer work party 6/23/2023</a>
33	Tunbridge Path	Top sign partially obstructed	
34	Visalia Walk	Top sign obstructed by vegetation	
35	Whitaker Path	Top sign partially obstructed	
36	Yosemite Steps (Lower)	Top sign partially obstructed	

## Attachment A

### List of Paths Improved by BPWA (as of April 2024)

1997-2002:

1. Oak Street Path
2. Keeler Path
3. Latham Walk
4. Anne Brower Path
5. Mosswood Lane
6. Acacia Walk
7. Atlas Path

2003:

8. Sterling Path
9. Stoddard Path

2004:

10. Upper Stevenson Path
11. Lower Stevenson Path
12. Wilson Walk
13. Upper Glendale Path

2005:

14. Columbia Walk
15. Lower Glendale Path
16. Acacia Steps
17. Upper Covert Path

2006:

18. Bret Harte Path
19. Middle Glendale Path
20. Cedar Street Path
21. Poppy Path

2007:

22. Shasta Path
23. Whitaker Path

2008:

24. Upper El Mirador Path
25. Ina Coolbrith (was Bret Harte Lane)

2009:

26. Lower Covert Path

2010:

27. Northgate Path

2011:

28. Miller Path East
29. Wildcat Path (path #80)

2012:

30. La Loma Path

2013:

31. Betty Olds Path (was #68 Twain)

2014:

32. Upper Halkin Walk

2015:

33. Tilden Path

2016:

34. John Muir Path (was Keeler Walk)

2020:

35. Lower Columbia Path
36. Lower Halkin Walk

2021:

37. Hilgard Path

**Attachment B**  
**Unbuilt Paths (as of April 2024)**

Count	Path Name	Path No	District	Lower Address	Upper Address	Elev Cha	Notes
<b>Completely blocked or encroached</b>							
1	Avenida Path	93	6	130-140 Avenida Dr.	1448-1452 Grizzly Peak Blvd.	74'	completely blocked top & bottom
2	Cragmont Path	58	6	1177-1197 Cragmont Ave.	1166-1170 Keeler Ave.	82'	completely encroached at top: 1166 Keeler
3	Miller Path West	42	6	1011-1013 Miller Ave.	998-1002 Grizzly Peak Blvd.	94'	completely blocked: fences across top, middle, bottom
4	Pat DeVito Path	71	6	1099-1105 Sterling Ave.	1096-1100 Miller Ave.	75'	completely encroached at top: 1096 Miller
5	Shasta Walk	63	6	1187-1195 Keeler Ave.	2885-2887 Shasta Rd.	48'	hot tub in ROW at bottom 1187 Keeler
6	Devon Lane (Upper)	8	5	763-765 San Diego Rd.	163-168 Southampton Ave.	58'	Surveyed, severe encroachment at top 168 Southampton. City Attorney in communication with homeowner about removing encroachments.
<b>Trees or walls in right-of-way</b>							
7	Columbia Path (Upper)	88	6	1399-1407 Queens Rd.	17-18 Columbia Circle	44'	PW and Parks removed trees from ROW in 2021. Stump remains in place. PW evaluating viability of building on steep cliff at the bottom of the path.
8	Harding Path	94	6	west of 1569 Campus Dr.	1504-1510 Olympus Ave.	61'	large eucalyptus in ROW at bottom of path; City looking into removing trees/ in communication with homeowner.
9	Summit Path	92	6	1419-1425 Grizzly Peak Blvd.	1396-1400 Summit Rd.	83'	large redwood in path ROW was removed years ago, but suckers are blocking the way now; neighbors aware of path and would like it built. COB looking into it.
10	Wilson Path	95	6	1585-1589 Campus Dr.	1572-1580 Olympus Ave.	116'	need survey at top, retaining walls bottom: 1589 Campus Dr.
<b>Unencroached, but very steep</b>							
11	Grizzly Path	91	6	185 Hill Rd. & 1371 Grizzly Peak Bl.	1328-1336 Summit Rd.	119'	more or less unencroached, very steep; neighbors aware of path and would like it built.
12	Delmar Path	86	6	opposite 1421 Glendale Ave.	31-35 Delmar Ave.	73'	more or less unencroached, very steep
13	Hill Path	66	6	1251-1269 Grizzly Peak Blvd.	80-100 Hill Rd.	112'	more or less unencroached, very steep
<b>No information</b>							
14	Parnassus Path	87	6	3079-3085 Buena Vista Way	8-9 West Parnassus Ct.	76'	bottom end not clear who owns: 3079 & 3085 Buena Vista
15	Twain Way	55	6	1137-1149 Cragmont Ave.	1122-1124 Keeler Ave.	96'	
<b>Dead end/private, no build possible</b>							
16	Eleanor Hall Gibson Path	59	6	dead end	1160-1168 Keith Ave.	23'	
17	Highland Path	111	6	Highland Ave. & Ridge Rd.	dead end at Lawrence Berkeley Lab	71'	
18	Laurel Lane	10	5	767-771 San Diego Rd.	dead end to private property	58'	
19	Le Conte Path	110	6	top of Le Conte Ave.	dead end at Lawrence Berkeley Lab	81'	
20	Path 74	74	6	Wildcat Canyon Rd.	Hillview Rd. & Woodside Rd.	56'	in Park Hills neighborhood
<b>Strong neighbor opposition</b>							
21	Glen Rose Alley	99	6	2235-2241 Rose St.	east of 2204 Glen Ave.	20'	paved alley; needs steps at N end to Glen Ave. Encountered strong neighbor opposition in the past. COB looking into building this.



**Attachment C - Handrail Inventory on Existing Paths (as of April 2024)**

	<b>Path</b>	<b>Handrail Coverage</b>	<b>Handrail Location</b>	<b>More needed, at least on stairs and steep sections</b>
1	Acacia Steps – added by BPWA Mar2023	Full	Side	
2	Alta Vista Path	Full	Side	
3	Arden Steps	Full	Side	
4	Atlas Path – added by BPWA Mar2023	Full	Side	
5	Bancroft Steps	Full	Center	
6	Billie Jean Walk	Full	Alternates	
7	Columbia Path (Lower) – added by BPWA Jul2020, \$16.5k	Full	Alternates	
8	Covert Path (Upper)	Full	Side	
9	El Mirador Path (Lower)	Full	Side	
10	Eunice Steps	Full	Center	
11	Fountain Walk	Full	Center	
12	Glendale Path (Middle) – added by BPWA Jan2023	Full	Side	
13	Halkin Walk (Lower) – added by BPWA Jun2021, \$24.8k	Full	Side	
14	Halkin Walk (Upper) – added by BPWA Jan2023	Full	Side	
15	Ina Coolbrith Path	Full	Side	
16	La Loma Path	Full	Side	
17	Martinez Path	Full	Center	
18	Maryland Walk	Full	Side	
19	North Path	Full	Side	
20	Oakridge Steps	Full	Center	
21	Park Path – added by COB Oct2020	Full	Alternates	
22	Poppy Path – added by BPWA Jun2021, \$23.8k	Full	Side	
23	Rose Steps	Full	Side	
24	Rose Walk	Full	Side	
25	Stevenson Path (Lower) – added by BPWA Jun2023	Full	Side	
26	Whitaker Path	Full	Side	
27	Acacia Walk	Partial	Side	
28	Arden Path	Partial	Side	✓
29	Avalon Walk	Partial	Side	
30	Berryman Path - Middle	Partial	Side	
31	Berryman Path - Upper	Partial	Side	
32	Bret Harte Path	Partial	Alternates	✓
33	Bret Harte Way	Partial	Side	
34	Claremont Path	Partial	Side	
35				
36	Covert Path (Lower)	Partial	Side	✓
37	Easter Way Lower	Partial	Center	✓
38	Easter Way Middle	Partial	Alternates	
39	El Mirador Path (Upper)	Partial	Side	
40	El Paseo (Lower)	Partial	Side	✓
41	El Paseo (Upper)	Partial	Side	
42	Florida Walk	Partial	Center	✓
43	Fred Herbert Path (Upper)	Partial	Side	✓

	<b>Path</b>	<b>Handrail Coverage</b>	<b>Handrail Location</b>	<b>More needed, at least on stairs and steep sections</b>
44	Garber Path	Partial	Side	✓
45	Glendale Path (Lower)	Partial	Side	✓
46	Glendale Path (Upper)	Partial	Side	✓
47	Hawthorne Steps	Partial	Center	
48	Hill Court Steps	Partial	Side	
49	Indian Rock Path (Arlington Ave to Indian Rock Ave)	Partial	Center	
50	Indian Rock Path (Contra Costa Ave to Mendocino Ave)	Partial	Side	
51	La Loma Steps	Partial	Side	
52	La Vereda Steps	Partial	Side	✓
53	Le Roy Steps	Partial	Center	
54	Miller Path East	Partial	Side	✓
55	Mosswood Lane	Partial	Side	
56	Northgate Path	Partial	Side	✓
57	Oakridge Path (East) - Partial HR added by COB Oct 2020. Need coverage at top of the path (4 steps)	Partial	Middle	✓
58	Oakridge Path (West) – added by COB Oct 2020	Partial	Middle	
59	Oak Street Path - East Segment	Partial	Side	
60	Orchard Lane (Lower)	Partial	Side	
61	Orchard Lane (Upper) – Partial HR added by COB Dec 2020. COB pricing out full HR coverage.	Partial	Alternates	✓
62	Oxford School Way	Partial	Side	
63	Patty Kates Path	Partial	Side	
64	Pine Path	Partial	Side	✓
65	Pinnacle Path	Partial	Side	
66	Poplar Path	Partial	Side	✓
67	Redwood Terrace	Partial	Side	✓
68	Rock Walk	Partial	Side	✓
69	Rose Walk	Partial	Side	
70	Santa Barbara Path	Partial	Side	
71	South Crossways	Partial	Side	✓
72	Sterling Path	Partial	Alternates	✓
73	Tamalpais Path - COB pricing out full HR coverage.	Partial	Side	✓
74	Tanglewood Path	Partial	Side	
75	Terrace Walk - Lower	Partial	Side	
76	The Cutoff	Partial	Center	✓
77	The Footway	Partial	Center	
78	The Steps	Partial	Center	
79	Tunbridge Lane - COB pricing out full HR coverage.	Partial	Side	✓
80	Upton Lane	Partial	Side	✓
81	Vincente Walk – added by COB on stair sections in 2022	Partial	Side	✓
82	Vine Lane	Partial	Side	
83	Willow Walk	Partial	Side	✓
84	Yosemite Steps Upper	Partial	Side	✓
85	Anne Brower Path	None		✓
86	Atlas Path	None		✓

	<b>Path</b>	<b>Handrail Coverage</b>	<b>Handrail Location</b>	<b>More needed, at least on stairs and steep sections</b>
87	Berryman Path - Lower	None		
88	Betty Olds Path	None		✓
89	Black Path	None		
90	Boynton Walk	None		✓
91	Cedar Path	None		✓
92	Chester Lane	None		
93	Columbia Walk	None		✓
94	Crescent Park Path	None		✓ (north segment)
95	Devon Lane (Lower)	None		✓
96	Easter Way Upper	None		
97	Encina Walk	None		
98	Fred Herbert Path (Lower)	None		
99	Fred Herbert Path (Middle)	None		
100	Geneva's Path	None		
101	Great Stoneface Path	None		✓
102	Hilgard Path	None		✓
103	Holmes Path	None		✓
104	Indian Rock Path (Mendocino Ave to Arlington Ave)	None		
105	Indian Rock Path (The Alameda to Contra Costa Ave)	None		✓
106	Indian Trail	None		✓
107	Jacque Ensign Way	None		
108	Jeronimus Alley	None		
109	John Muir Path (was Keeler Walk)	None		✓
110	Keeler Path	None		
111	Keoncrest Path	None		
112	Latham Walk	None		✓
113	Mendocino Path	None		
114	Oak Knoll Path	None		✓
115	Oak Street Path (West)	None		✓
116	Rose Walk	None		
117	Ruth Armstrong Path	None		
118	Scott Newhall Path	None		
119	Shasta Path	None		✓
120	Stevenson Path (Upper)	None		✓
121	Stoddard Path	None		✓
122	Sunset Trail	None		
123	Terrace Walk - Upper	None		
124	The Crossways	None		✓
125	Tilden Path	None		✓
126	Visalia Walk - COB looking into installing HR.	None		✓
127	Vistamont Trail	None		
128	Wildcat Path	None		✓
129	Wilson Walk	None		✓
130	Yosemite Steps (Lower)	None		✓