

[View this email in your browser](#)



SUMMER WORK PARTIES CLEAR PATHS



Left, Ruby Chang, 96, swept up North Path. Right, Sydney Dowdy, 13, a path fixer-upper.

Volunteers From Ages 13 to 96 Clean Up Berkeley Paths

About 60 volunteers, ranging in age from 13 to 96, weeded, swept, and cleared the way on 6 paths this summer.

The 8 work parties that it took to clear the paths were led by Mary Ross Lynch, who has organized weekday parties monthly since 2015, and former BPWA president Alina Constantinescu, who began leading weekend work parties this year.

Sydney Dowdy, age 13 and a student at Prospect Sierra, weeded, swept, and fixed the steps on Betty Olds Path with his mother, Signe Burns, in July and August.

“I used a mallet to hammer in spikes on the steps. The different forces underground can cause them to rise,” Dowdy says. “I enjoyed being part of a community and helping others. I’m definitely going to do it more in the future.”

Constantinescu says that working on North Path with Ruby Chang, age 96, “made my day.”

“Ruby let me know that she was born the same year as the Queen but is in fact older than her,” Constantinescu says. “From 13 year olds to 96 and beyond, the paths have the best caretakers!”

Lynch, who has led more than 100 work parties, notes that volunteers are welcome to “adopt” a path to maintain, as Marc Rumminger (Visalia Walk), BPWA board member [John Ford](#) (Upton Lane), and Sydney Dowdy and his parents Signe Burns and Johan Dowdy (Ina Coolbrith Path) have done.

“The City of Berkeley Parks Department picks up piles of weeds for us,” Lynch says. “So, anyone who is considering adopting a path need not worry about disposal of weeds.”

To see pictures of our path volunteers and their work, [READ MORE](#).

Anyone who would like to adopt a path or receive notification of upcoming work parties can write to Lynch at path.maintenance@berkeleypaths.org. Work parties are also listed in BPWA’s monthly newsletter.

ANNUAL MEMBERSHIP MEETING & WALKS

**Join Us for Our 2022 Annual Membership Meeting:
Meet New Board Members, Celebrate Achievements, Vote on Your
Favorite T-shirt Design, and Go For a Path Walk**

When: Saturday, October 15, 10 a.m.

Where: [Live Oak Park](#) Picnic Area #2, between Walnut and Oxford streets next to Berryman Path

Please join Berkeley Path Wanderers Association for our 2022 annual meeting on Saturday, October 15, in Live Oak Park. We’ll introduce and elect two new board members, Madeleine Kahn and Jane Andersen; take a look back at 2022 achievements and challenges, and look forward to 2023, our 25th anniversary year; and vote on the design for our commemorative anniversary T-shirt! [Read more](#)

After the meeting, walk leaders Janet Byron (short stroll), John Ford (medium walk), and Tamara Gurin (long walk) will lead 3 walks of different lengths, beginning at 11 a.m.. All

walks start at Live Oak Park, and well-behaved dogs on leash are welcome. See below for details.

SHORT WALK: A Stroll Around Live Oak Park and North Shattuck

Leader: Janet Byron

Distance: 1.5 miles

Accessibility: Mostly flat, with no steps

On this leisurely, 1-hour stroll we see points of interest in the historic North Shattuck neighborhood, including three homes designed by Bernard Maybeck, several elderly Victorians, the Wavy Gravy commune and childhood home of Helen Wills Moody, and religious institutions. We'll end at Saul's for lunch outdoors together for whoever would like to join.



MEDIUM WALK: A few paths and a great view

Leader: John Ford

Distance: 3 miles

Accessibility: The route includes several sets of stairs.

We will venture uphill a bit using three paths including the historic Rose Walk, stop for the view at Greenwood Commons, and then work our way to La Vereda and our newest path, Hilgard. From there we will walk over to and through the UC campus. After leaving campus, we'll take the Ruth Armstrong Path to Walnut Street and back to the start.

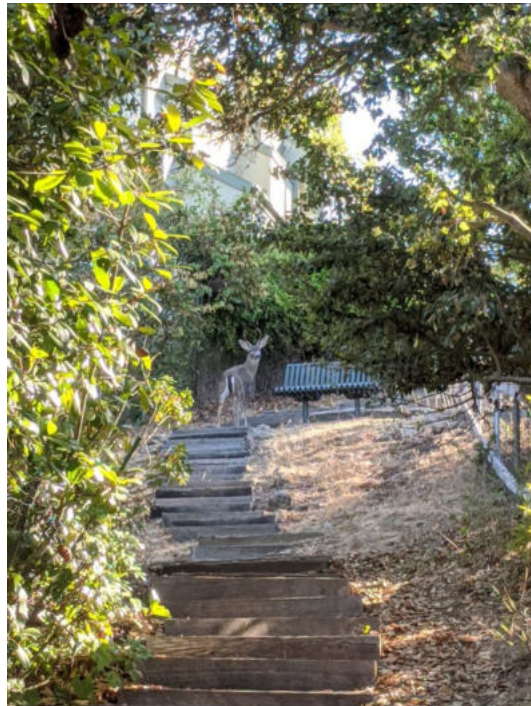
LONG WALK: To the Peak

Leader: Tamara Gurin

Distance: 4.5 miles

Accessibility: Rigorous walk on stairways and steep paths.

Get ready to climb to the hilltops and explore some steep paths on this hearty walk from Live Oak Park all the way to Grizzly Peak Boulevard. On our way, we will take stairway paths (Berryman, Tamalpais, Covert, Whitaker, Stevenson, and Stoddard) before catching the Selby Trail at Shasta Road. We'll return to Live Oak Park via Atlas Path, Glendale Path, and Glendale-La Loma Park. All together we'll walk 10 of Berkeley's paths, gain about 800 feet in altitude, and climb about 1,000 stairs!



Bring water and snacks. Dress in layers and comfortable shoes. In wet weather the trails and steps may be slippery. Heavy rain will cancel this walk.

VOLUNTEER OPPORTUNITIES!

BPWA currently seeks volunteers for the following opportunities:

- **Graphic designer** — volunteer to help with our commemorative 25th anniversary T-shirt
- **Walks coordinator** — board position to help organize monthly walks
- **Events and marketing coordinator** — board position to take the lead on organizing BPWA events including Solano Stroll, BAHA tour, annual meeting, and other events; and oversee sales and fulfillment of BPWA swag
- **Webmaster** — board position to oversee postings to website, site upgrades and redesign, and newsletter layout
- **Social media coordinator** — board or volunteer position to take the lead on social media for BPWA; manage our Facebook, get us on Instagram and Twitter

No experience necessary. We will train you! Interested? Write to Janet Byron at info@berkeleypaths.org

MEASURE L AND BERKELEY'S PATHS

By Janet Byron, BPWA President

On Tuesday, Nov. 8, Berkeley voters will consider [Measure L](#), a bond measure that requires a two-thirds vote to pass:

"Shall the measure to create affordable housing; repair streets and sidewalks; underground utilities; and enhance buildings, infrastructure, and safety, authorizing the issuance of \$650 million in general obligation bonds, subject to independent oversight and audits, be adopted? Financial Implications: Median annual cost over the projected 48-year period bonds are outstanding is approximately \$40.91 for every \$100,000 or \$265 for the average assessed home value of \$647,000; raising approximately \$25,000,000/year."

The \$650 million bond measure would allocate approximately \$70 million for a range of infrastructure projects, including the city's paths network:

"The City further intends to issue the Bonds to finance the acquisition or improvement of real property for public infrastructure and facilities including but not limited to the City's streets (including pavement, traffic safety, pedestrian, accessibility, bicycle, and streetscape improvements), **sidewalks and paths**; public utilities, including the undergrounding of utilities on evacuation routes; parks, the waterfront and pier, and other natural and landscaped areas; pools, recreation, and senior facilities; camps; buildings; storm drains, streetscapes, and green infrastructure; civic, historic, and cultural sites; and other public open spaces, buildings, infrastructure, facilities, and amenities, including construction, repair, renovation, replacement, or reconstruction, so that the public can continue to benefit from safe, more sustainable, resilient, and enjoyable Infrastructure Improvements."

Berkeley Path Wanderers Association has presented the city council with an approximately [\\$5 million proposed budget](#) for path maintenance, handrails, wayfaring signage, and lighting, based on needs identified in our [Paths Condition Report](#), a survey that we conduct every 5 years. Because no funds are specified in Measure L for path improvements, if the measure passes BPWA will advocate for path spending that improves accessibility and walkability for all path-users, especially as needed in an emergency evacuation.

UPCOMING WALKS

NOTE: Walk leaders request that all participants be vaccinated and boosted, or masked. Heavy rain cancels.

[Albany Hill Sunset Hike](#)

When: Friday, October 7, 6–8 p.m.

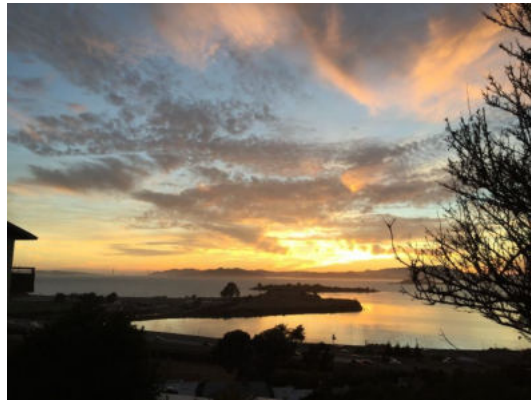
Leader: Alina Constantinescu

Start/End: [Carlson Blvd at Cerrito Creek Path](#), El Cerrito, 0.4 miles from the El Cerrito Plaza BART station.

Distance: 3 miles

Accessibility: Many stairs and some uneven trails. Well-behaved dogs on leash are welcome.

Grab your flashlight and start the weekend with an evening hike up Albany Hill. We will explore the hill trails as well as a couple of urban paths and staircases. On a clear evening, the views from the hill are breathtaking. Join us! [Read more](#)



[Parks Walk](#)

When: Sunday, October 30, 4:30–6 p.m.

Leader: Petra Biddle-Gottesman

Start/End: [Cragmont Rock Park](#)

Distance: 3 miles

Accessibility: Some stairways and steep paths. Well-behaved dogs on leash are welcome.

This walk will lead us through six parks in north Berkeley. Starting (and ending) at Cragmont Rock park, we'll wind our way through Remillard, John Hinkel, Grotto Rock, Mortar Rock, and Indian Rock parks. We will be taking the paths wherever possible, [Read more](#)

[Sunrise Hike in Tilden Park](#)

When: Saturday, November 5, 6:15–9 a.m.

Leader: Alina Constantinescu

Start/End: Tilden Park [Inspiration Point](#)

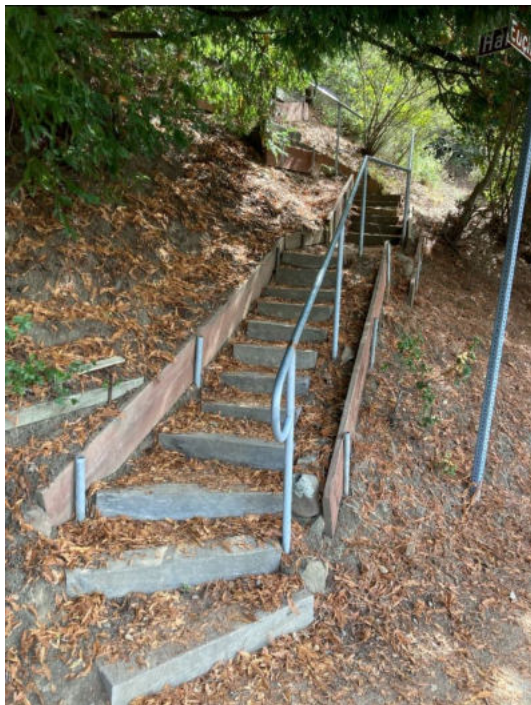
Distance: 4.4 miles

Accessibility: Mostly paved and gentle—but a steep, unpaved path for the final 1/4 mile

Calling all the early risers for a sunrise hike in Tilden Park! The hike is 4.4-miles round-trip with an 800-foot elevation gain



starting off IN THE DARK with the city lights twinkling in the distance. The route follows a mostly paved, relatively easy trail with a steep hill on the last, unpaved 1/4 of a mile. [Read more](#)



[Wandering the North Berkeley Hills](#)

When: Saturday, November 12, 9:00 am

Leader: John Ford

Start/End: Live Oak Park, meet at the bridge on Shattuck just north of Berryman

Distance: 10.5 miles

Accessibility: A strenuous walk of about 10.5 miles and 41 paths, including many stairs

We will take a convoluted route designed to cover as many paths as we can. If we manage to complete the entire route, we will have walked 41 paths including 50 different segments. There will be lots of stairs, both up and down, and lots of great views. [Read more](#)

PATH MAINTENANCE WORK PARTIES



Join a path maintenance work party!

Sunday, October 9, 10 a.m. to 12 p.m.

Monday, October 17, 10 a.m. to 12 p.m.

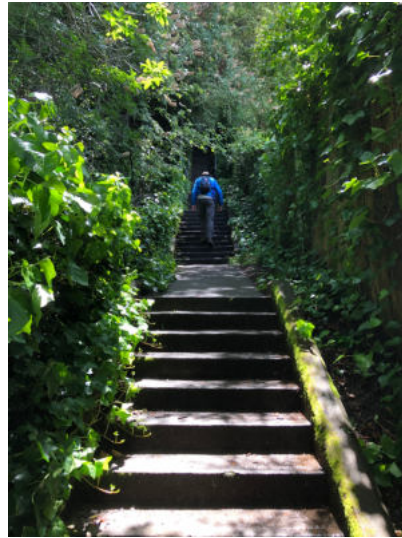
Help us keep our paths clear for all to enjoy by joining us at a path maintenance work party! The work is mostly weeding, sweeping, raking, and clipping. We will have gloves and tools available, but feel free to bring your own. Please bring your own water; we won't be offering water or refreshments.

Please RSVP to receive an email with the locations for this month's work parties: path.maintenance@berkeleypaths.org

Berkeley Path Wanderers Association (BPWA) is a community organization of people who treasure the public pathways that crisscross our city. [Learn more](#)

The BPWA board generally meets monthly. **Our annual membership meeting is Oct. 15 (see above), and next board meeting is Nov. 10, 7–8:30 p.m.** Guests are welcome! Please contact info@berkeleypaths.com for more information.

To support our path-building efforts, you can [donate online](#). All donations go toward building new paths, repairing and clearing paths, purchasing handrails, and advocating for paths.



DONATE



Copyright © 2022 Berkeley Path Wanderers Association, All rights reserved.

Want to change how you receive these emails?
You can [update your preferences](#) or [unsubscribe from this list](#).

